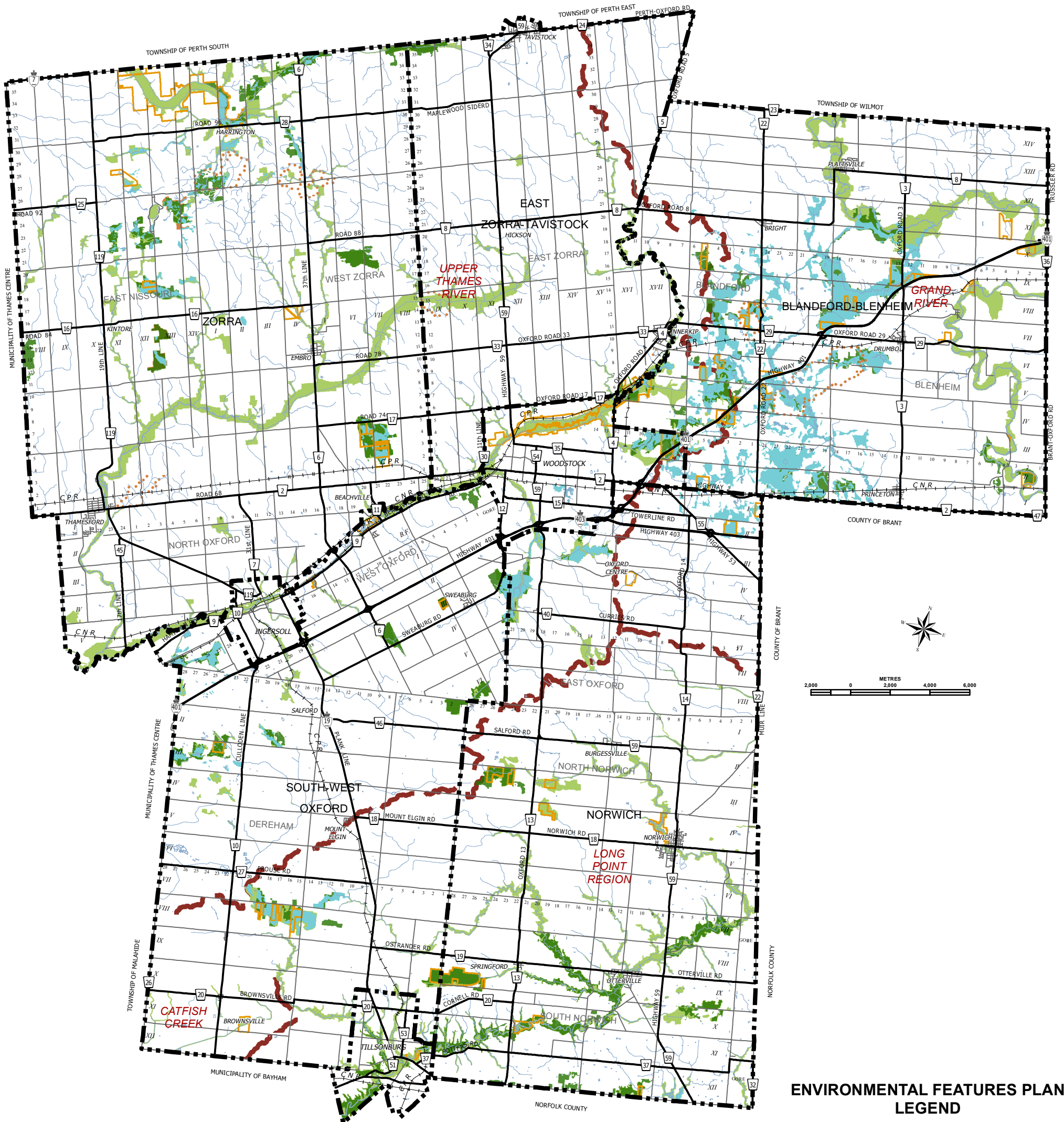


SCHEDULE "C-1"  
**COUNTY OF OXFORD**  
**ENVIRONMENTAL FEATURES PLAN**

**COUNTY OF OXFORD**  
**OFFICIAL PLAN**



**ENVIRONMENTAL FEATURES PLAN  
 LEGEND**

- LOCALLY SIGNIFICANT NATURAL HERITAGE FEATURES
- PROVINCIALLY SIGNIFICANT WETLANDS
- LIFE SCIENCE AREAS OF NATURAL AND SCIENTIFIC INTEREST
- SIGNIFICANT VALLEYLANDS
- CONSERVATION AUTHORITY LAND
- EARTH SCIENCE AREA OF NATURAL AND SCIENTIFIC INTEREST
- WATERSHED BOUNDARIES

**BASE MAP  
 LEGEND**

- MUNICIPAL LIMITS
- MAJOR ROADS
- OTHER ROADS
- RAILROADS
- WATERCOURSE

THIS SCHEDULE FORMS A PART OF THE COUNTY OF OXFORD OFFICIAL PLAN AND MUST BE READ IN CONJUNCTION WITH THE WRITTEN TEXT.

THIS IS AN OFFICE CONSOLIDATION PREPARED FOR CONVENIENCE ONLY. FOR ACCURATE REFERENCE RECOURSE SHOULD BE HAD TO THE ORIGINAL DOCUMENT AND AMENDMENTS HERETO.

NOTES: THIS MAP MAY INCORPORATE DATA UNDER LICENCE AGREEMENT(S) WITH THE UPPER THAMES RIVER CONSERVATION AUTHORITY, THE GRAND RIVER CONSERVATION AUTHORITY, THE LONG POINT REGION CONSERVATION AUTHORITY, THE MINISTRY OF NORTHERN DEVELOPMENT AND MINES, THE MINISTRY OF NATURAL RESOURCES AND THE QUEEN'S PRINTER OF ONTARIO. ©2015

COUNTY COUNCIL APPROVAL: MARCH 11, 2015