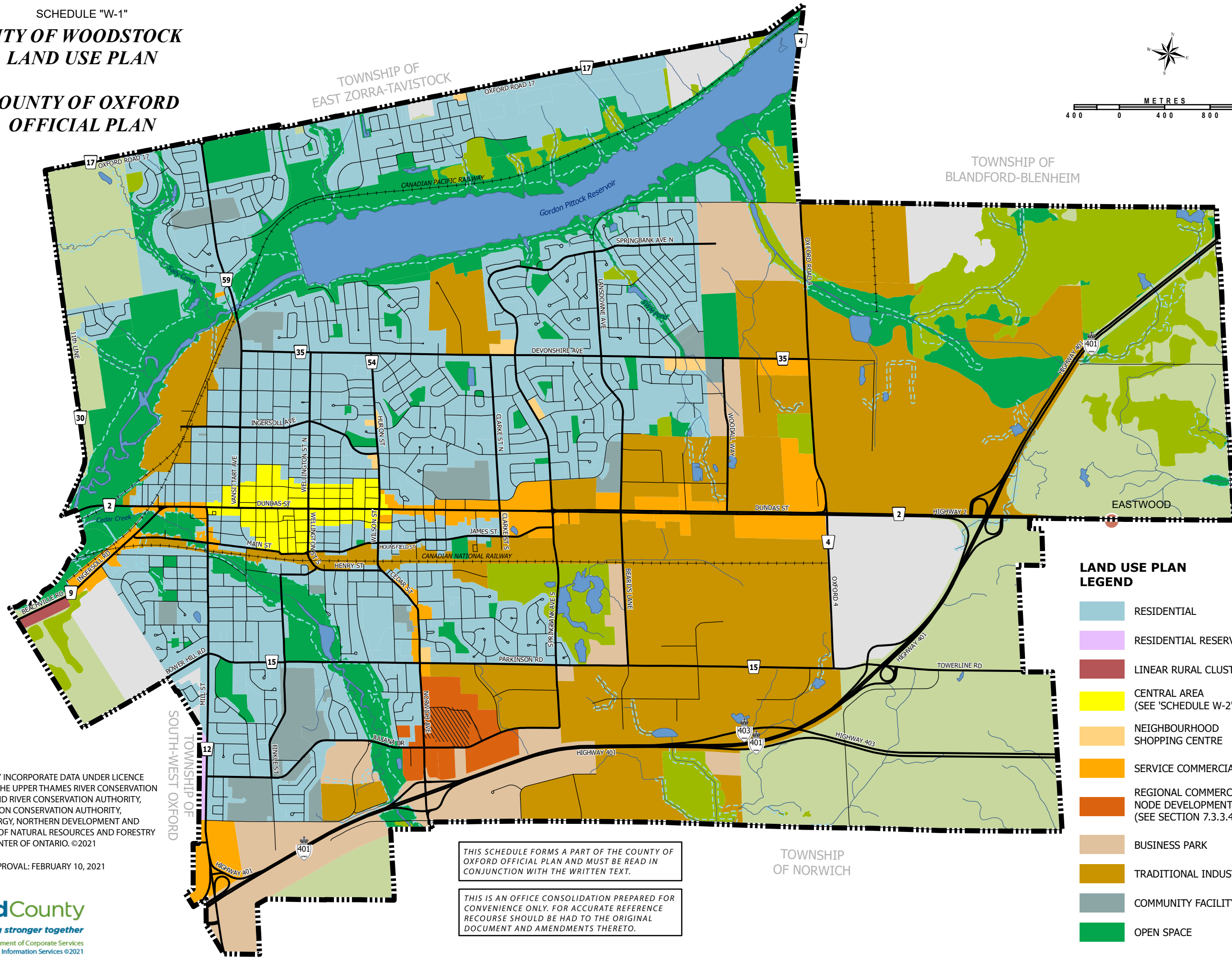
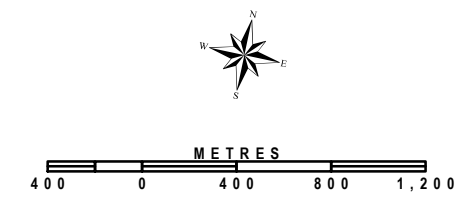


SCHEDULE "W-1"  
**CITY OF WOODSTOCK**  
**LAND USE PLAN**  
**COUNTY OF OXFORD**  
**OFFICIAL PLAN**

SCHEDULE "W-1"



- LAND USE PLAN LEGEND**
- RESIDENTIAL
  - RESIDENTIAL RESERVE
  - LINEAR RURAL CLUSTER
  - CENTRAL AREA (SEE 'SCHEDULE W-2')
  - NEIGHBOURHOOD SHOPPING CENTRE
  - SERVICE COMMERCIAL
  - REGIONAL COMMERCIAL NODE DEVELOPMENT (SEE SECTION 7.3.3.4.2)
  - BUSINESS PARK
  - TRADITIONAL INDUSTRIAL
  - COMMUNITY FACILITY
  - OPEN SPACE
  - ENVIRONMENTAL PROTECTION
  - AGRICULTURAL RESERVE
  - FUTURE URBAN GROWTH
  - REGIONAL COMMERCIAL NODE (See Section 7.3.3.4.3)
  - RURAL CLUSTERS
  - FLOODLINE
- BASE MAP LEGEND**
- MUNICIPAL BOUNDARY
  - MAJOR ROADS
  - OTHER ROADS
  - RAILWAY
  - WATERCOURSE

NOTES: THIS MAP MAY INCORPORATE DATA UNDER LICENCE AGREEMENT(S) WITH THE UPPER THAMES RIVER CONSERVATION AUTHORITY, THE GRAND RIVER CONSERVATION AUTHORITY, THE LONG POINT REGION CONSERVATION AUTHORITY, THE MINISTRY OF ENERGY, NORTHERN DEVELOPMENT AND MINES, THE MINISTRY OF NATURAL RESOURCES AND FORESTRY AND THE QUEEN'S PRINTER OF ONTARIO. ©2021

COUNTY COUNCIL APPROVAL: FEBRUARY 10, 2021



THIS SCHEDULE FORMS A PART OF THE COUNTY OF OXFORD OFFICIAL PLAN AND MUST BE READ IN CONJUNCTION WITH THE WRITTEN TEXT.

THIS IS AN OFFICE CONSOLIDATION PREPARED FOR CONVENIENCE ONLY. FOR ACCURATE REFERENCE RECOURSE SHOULD BE HAD TO THE ORIGINAL DOCUMENT AND AMENDMENTS THERETO.

TOWNSHIP OF NORWICH

TOWNSHIP OF SOUTH-WEST OXFORD

TOWNSHIP OF BLANDFORD-BLENHEIM

TOWNSHIP OF EAST ZORRA-TAVISTOCK

EASTWOOD