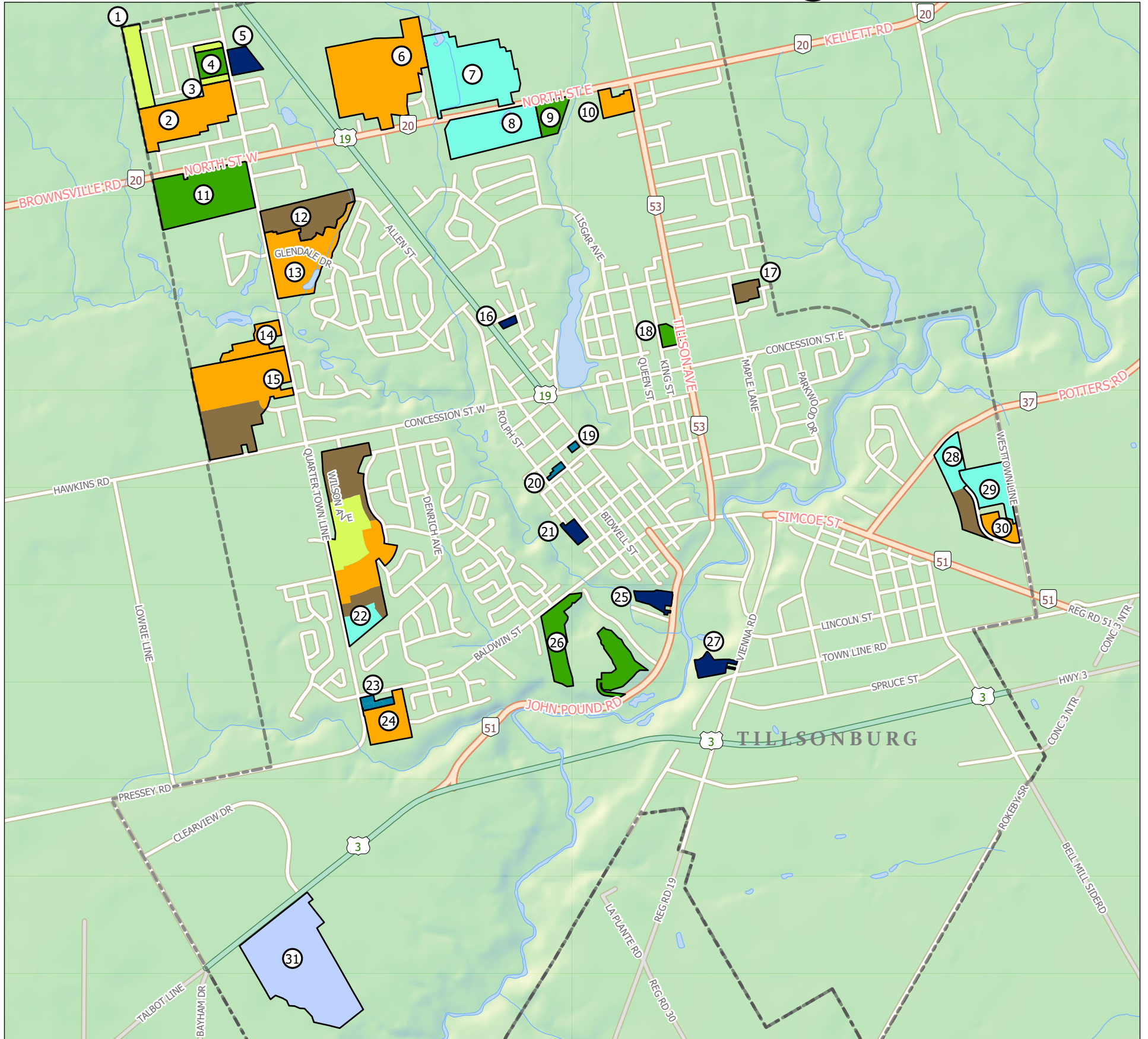


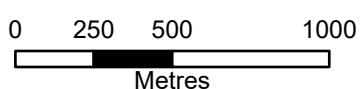
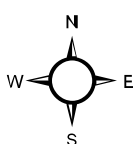
# Development Activity Town of Tillsonburg



- |   |  |  |  |
|---|--|--|--|
| Residential Development   | <span style="color: yellow;">■</span> Draft Approved Plan  | <span style="color: brown;">■</span> Registered Plan     | Industrial Development                                       |
| <span style="color: green;">■</span> Circulated or Submitted Plan | <span style="color: blue;">■</span> Condominium Plan       | <span style="color: lightgreen;">■</span> Built Out Plan | <span style="color: lightblue;">■</span> Draft Approved Plan |
| <span style="color: orange;">■</span> Built or Nearly Built Plan  | <span style="color: darkblue;">■</span> Approved Site Plan |  |  |

Map #	File Number	Total Units	Name
1	32T-89006	46	Southridge Subdivision (Morning Glory)
2	32T-88005	101	Woodland Estates
3	32T-96007	20	Southridge Subdivision (Daisy Court)
4	TSPC 7-201	104	2563557 Ontario Inc.
5	TSPC 7-178	64	2563557 Ontario Inc.
6	M-16	181	Rolling Meadows
7	32T-07006	175	LindProp
8	SB 19-06-7	158	Mike Hutchinson Properties (Northcrest Estates)
9	TSPC 7-200	59	Hayhoe Rentals Ltd.
10	32T-96001	27	Sandy Court (McLaughlin)
11	SB 20-06-7	107	Southside Construction Mgmt (London) Ltd.
12	32T-03005	73	Brookside II
13	32T-77004	45	Brookside I
14	32T-90011	38	MGI Inc. (The Links)
15	32T-90006	212	Oak Park (phase 1 and 2)
16	TSPC 7-179	16	Tillsonburg Non-profit Housing

Map #	File Number	Total Units	Name
17	SB 14-06-7	16	Wetlauffer
18	OP 20-13-7	98	1822094 Ontario Inc. (Escalade Property Corp.)
19	CD19-02-7	28	JMR Properties Ltd
20	TSPC 7-142	120	Stationview Development Corp.
21	TSPC 7-177	45	TVDSB (83 Rolph Street)
22	32T-06005	332	Victoria Wood
23	CDM-08001	17	Permtterra Development (Phase 1-3)
24	32T-05004	38	Woodhaven
25	TSPC 7-81	23	Aspden Developments Inc.
26	SB 20-02-7	88	2407774 Ontario Ltd
27	TSPC 7-199	26	1967113 Ontario Inc.
28	SB 10-03-7	22	Harvest Retirement Community
29	SB 18-02-7	88	2385667 Ont. Ltd. (Oxnard Developments)
30	TSPC 7-141-1	152	Harvest Retirement Community (York Hop Corporation)
31	32T-09004		Town Industrial Park



LAST UPDATE: December, 2020

Note: These maps are not intended to show all development. Only larger residential and industrial subdivisions/site plan applications are depicted.



Produced By The Department of Corporate Services  
Information Services ©2020