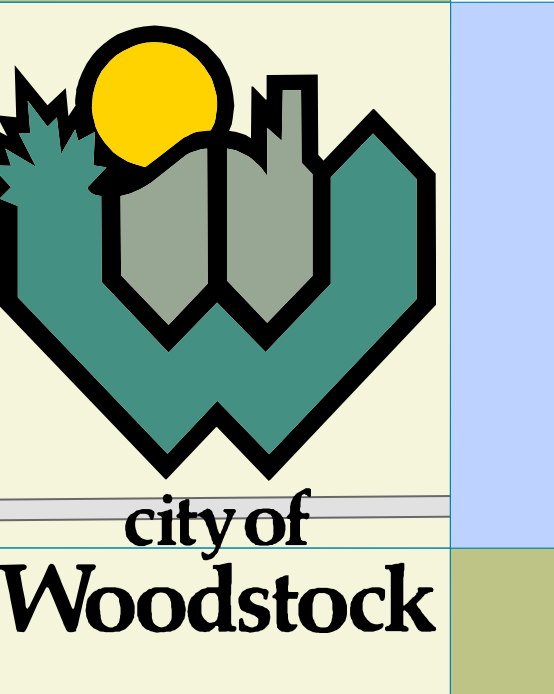


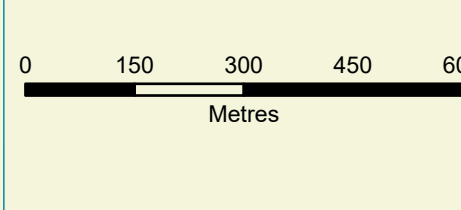
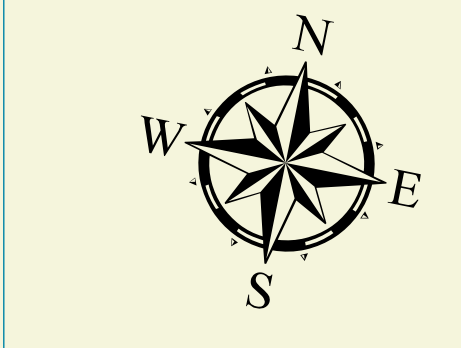
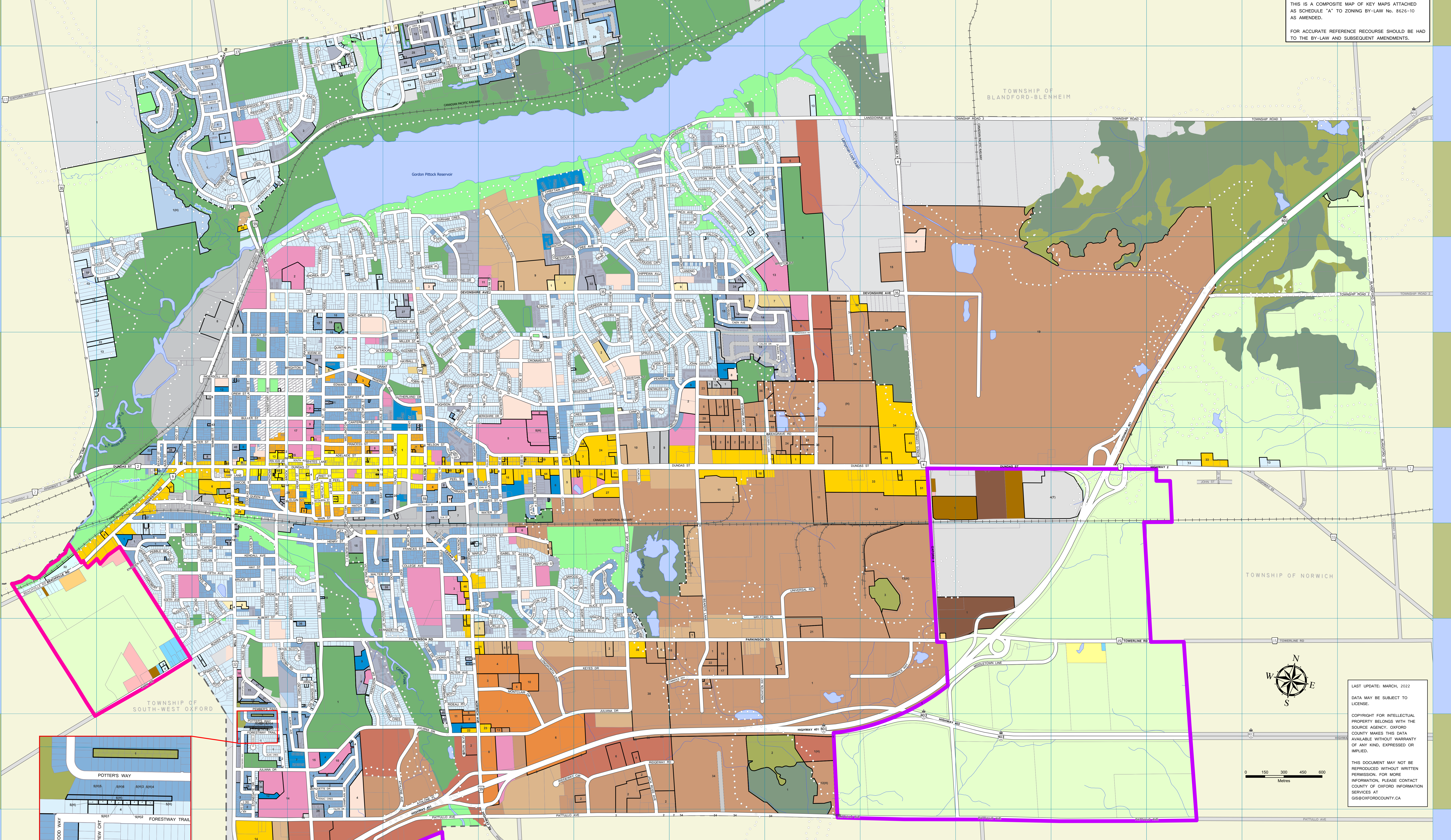
City of Woodstock Zoning By-Law No 8626-10



ZONING BY-LAW No. 8626-10

RESIDENTIAL TYPE 1 (R1)	REGIONAL COMMERCIAL (C6)	OPEN SPACE (OS2)	GENERAL AGRICULTURAL (A2)
RESIDENTIAL TYPE 2 (R2)	HISTORICAL DISTRICT RESIDENTIAL (HD)	ENVIRONMENTAL PROTECTION (EP1)	DEVELOPMENT (D)
RESIDENTIAL TYPE 3 (R3)	PRESTIGE OFFICE & INDUSTRIAL (MI)	ENVIRONMENTAL PROTECTION (EP2)	HIGHWAY COMMERCIAL (HC)
RESIDENTIAL TYPE 4 (R4)	FUTURE DEVELOPMENT (FD)	INSTITUTIONAL ZONE (I)	RESIDENTIAL EXISTING LOT (RE)
LOCAL COMMERCIAL (C1)	GENERAL INDUSTRIAL (M3)	PLANNED UNIT DEVELOPMENT (PUD)	RURAL RESIDENTIAL (RR)
SHOPPING CENTRE (C2)	EXISTING INDUSTRIAL (M4)	NEIGHBOURHOOD INSTITUTIONAL (NI)	CONSERVATION AUTHORITY REGULATION LIMIT See General Provisions 5.1, 5.6
ENTREPRENEURIAL (C3)	GENERAL INDUSTRIAL (M5)	COMMUNITY FACILITY (CF)	AGRICULTURAL (AG)
HIGHWAY COMMERCIAL (C4)	RESTRICTED INDUSTRIAL (MR)	AGRICULTURAL (AG)	LIMITED AGRICULTURAL (A1)
CENTRAL COMMERCIAL (C5)	OPEN SPACE (OS1)	LIMITED AGRICULTURAL (A1)	NORWICH BY-LAW 07-2003-Z
			SOUTH-WEST OXFORD BY-LAW 25-98

THIS IS A COMPOSITE MAP OF KEY MAPS ATTACHED AS SCHEDULE "A" TO ZONING BY-LAW NO. 8626-10 AS AMENDED.
FOR ACCURATE REFERENCE RECOURSE SHOULD BE HAD TO THE BY-LAW AND SUBSEQUENT AMENDMENTS.



LAST UPDATE: MARCH, 2022
DATA MAY BE SUBJECT TO LICENSE.
COPYRIGHT FOR INTELLECTUAL PROPERTY BELONGS WITH THE SOURCE AGENCY. OXFORD COUNTY MAKES THIS DATA AVAILABLE WITHOUT WARRANTY OF ANY KIND, EXPRESSED OR IMPLIED.
THIS DOCUMENT MAY NOT BE REPRODUCED WITHOUT WRITTEN PERMISSION. FOR MORE INFORMATION, PLEASE CONTACT COUNTY OF OXFORD INFORMATION SERVICES AT 656-6363/6364

Woodstock Street Index

110-LINE	A1-01	BEACHVILLE RD	H1	BROCK ST	G3	CLARKE STS	O9	EASTVIEW AVE	G4	GLENGRAN AVE	E4 E5	HIGHWAY 40	E1, F0, J0, J1, J2	JUNIPER ST	B6, G0	NORTH-LINE CRES	O4	PEERS PL	H8, H9	SHENSTONE AVE	E5	TALON DR	E5	WINDY CHALKER PL	O4, H4
120-LINE	A1-02	BEACON RD	H4, H5, G4	BROOKFIELD DR	H6, H7	COLLEGE AVE	H5	EDMUNDOUR DR	B5, B6, C5, C6	GOULDVIEW CRT	F8, F9	HIGHWAY 59	A2, A3, B3, C3, K6, L6	JULIAN PL	H4, H5	NOVA SCOTIA CRT	H, H4	PIPER ST	H, H4	TAMM BLVD	H4	WINDY CHALKER PL	O4, H4		
130-LINE	A1-03	BEAVERS LANE	G6, H6, H8	BROWNWOOD PL	H7	COMBES WAY	H7, H8	EDMUNDOUR DR	B5, B6, C5, C6	GOULDVIEW CRT	F8, F9	HIGHWAY 59	A2, A3, B3, C3, K6, L6	JULIAN PL	H4, H5	NOVA SCOTIA CRT	H, H4	PIPER ST	H, H4	TAMM BLVD	H4	WINDY CHALKER PL	O4, H4		
140-LINE	A1-04	BEAVERS LANE	G6, H6, H8	BROWNWOOD PL	H7	COMBES WAY	H7, H8	EDMUNDOUR DR	B5, B6, C5, C6	GOULDVIEW CRT	F8, F9	HIGHWAY 59	A2, A3, B3, C3, K6, L6	JULIAN PL	H4, H5	NOVA SCOTIA CRT	H, H4	PIPER ST	H, H4	TAMM BLVD	H4	WINDY CHALKER PL	O4, H4		
150-LINE	A1-05	BEAVERS LANE	G6, H6, H8	BROWNWOOD PL	H7	COMBES WAY	H7, H8	EDMUNDOUR DR	B5, B6, C5, C6	GOULDVIEW CRT	F8, F9	HIGHWAY 59	A2, A3, B3, C3, K6, L6	JULIAN PL	H4, H5	NOVA SCOTIA CRT	H, H4	PIPER ST	H, H4	TAMM BLVD	H4	WINDY CHALKER PL	O4, H4		