

## Appendix F: Public Consultation Centre No. 2 & Comments

General Help Wanted    General Help Wanted    General Help Wanted    General Help Wanted



# JOIN OUR TEAM

## DISCOVERY NIGHT

WEDNESDAY, JANUARY 13<sup>TH</sup> | 6pm

If you have an entrepreneurial mindset, enjoy building relationships & love planning dream vacations, a career as an Vacation Consultant could be right for you!

**SPACE IS LIMITED - RSVP TODAY**

**(519) 537 8333**  
442A Dundas St, Woodstock  
[www.joinesc.com/Woodstock](http://www.joinesc.com/Woodstock)



Contractors    Contractors    Renovations    Renovations



**Charron CONSTRUCTION**  
General Contracting

- Complete home renovations • Bathrooms
- Kitchens • Additions • Garages • Siding
- Soffit • Eavestrough
- Windows & door replacements
- Decks & fences • Concrete floors & sidewalks

Contact Norm Charron  
**519-521-6370**  
or email [charronconst@rogers.com](mailto:charronconst@rogers.com)



**MAITLAND CONSTRUCTION**  
ANYTHING & EVERYTHING  
**519-537-6768**  
Licensed Carpenters DON KLEMP  
Woodstock, Ont.

Auction Sales    Auction Sales    Auction Sales    Carpet/Flooring

## NOTICE OF AUCTION

Public Storage (PS Canada Company ULC, and Public Storage Canadian Properties) will sell the contents contained within the spaces belonging to the delinquent accounts listed below. Sale will occur by way of online competitive public auction at the web address noted below. These sales are conducted to recover rent and expenses owing. Please note that these auctions may be removed or delayed at the discretion of Public Storage.

To view a full listing of all Public Storage auctions, visit <http://publicstoragecanada.com/auctions>.

**\*\*\*ONLINE AUCTION ONLY\*\*\***  
1310 DUNDAS ST. WOODSTOCK  
**508**

Tenants may pay the amounts owing to secure the contents of the spaces prior to the auction up to two hours before the auction end date.


### FLOORING INSTALLATIONS

- Hardwood
- Ceramic Tile
- Vinyl • Carpet
- Laminate
- Heat Welding
- Custom work

Dan Fieldhouse  
20 years experience  
**519-469-9236**

**REACH MORE With Targeted Local Advertising**

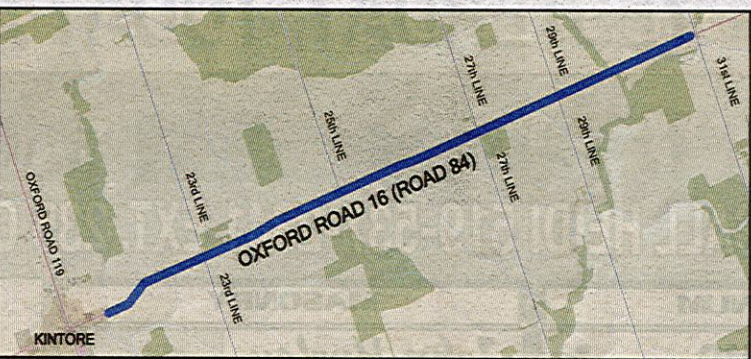
Public Notices    Public Notices    Public Notices    Public Notices    Public Notices



## Public Notice

### NOTICE OF PUBLIC CONSULTATION CENTRE #2 CLASS ENVIRONMENTAL ASSESSMENT (CLASS EA)

#### OXFORD ROAD 16 (Road 84) Improvements, from Kintore to 31st Line



Oxford County is conducting a Class Environmental Assessment (Class EA) for Oxford County Road 16 (Road 84), from Kintore to 31st Line (see map), to consider options for transportation corridor improvements to satisfy future travel demands on Oxford Road 16 (Road 84).

In order to best address travel demands along Oxford County Road 16 (Road 84), a number of road improvement alternatives are being examined as part of the study including road widening, pedestrian and cycling facilities and over-all traffic operations, as well as the impact of such improvements on the social and natural environments. The study is being conducted in accordance with Schedule C of the Municipal Class Environmental Assessment (October 2000, amended 2007 & 2011), which is approved under the Ontario Environmental Assessment Act. The study will define the problem or opportunity, identify and evaluate alternative solutions, and determine a preferred solution in consultation with area stakeholders, regulatory agencies and the public.

Public and review agency consultation is a key element of the Class EA process. Interested members of the public, businesses and agencies are encouraged to attend the second Public Consultation Centre (PCC #2) to view and provide input on the alternative solutions for part of Oxford Road 16.

**WHEN:** Tuesday, January 26, 2016, from 7:00 pm to 8:30 p.m.

**WHERE:** Chalmers United Church, 842989 Road 84, Kintore, Ontario

Upon completion of the study, an Environmental Study Report will be prepared and placed on public record for a 30-day review period. The document will detail the planning process and the preferred alternative.

We are interested in hearing any comments or input that you may have about this study. For further information, please contact:

**Dadean Assam, P.Eng.**, Oxford County Public Works Dept.  
21 Reeve Street, P.O. Box 1614, Woodstock, Ontario N4S 7Y3  
519-539-9800, ext. 3117, or [dassam@oxfordcounty.ca](mailto:dassam@oxfordcounty.ca)

*Information will be collected according to the Municipal Freedom of Information and Protection of Privacy Act. With exception of personal information, all comments will be part of public record.*

**Robert Walton, P.Eng.**  
Director of Public Works

[oxfordcounty.ca](http://oxfordcounty.ca)

oxfordcounty.ca    f    t

**Carpet/Flooring**

**Albert Versteeg**  
EXPERIENCED CERAMIC TILE CONTRACTOR FOR FLOORS & WALLS  
Woodstock  
**519-521-8101**

**Computer Services**

**COMPUTER SLOW?...**We can help! Repairs, Sales, tune-ups, Virus Scans. SHURR Electronics, 157 Thames St. S. Ingersoll 519-485-2790

**COMPUTER SLOW?...**We can help! Repairs, Sales, tune-ups, Virus Scans. SHURR Electronics, 157 Thames St. S. Ingersoll 519-485-2790

**Gardening Landscaping Services**

**Carpentry**

**SUNROOMS**, add a room, porch enclosures by Sunspace, website: [www.bkicarpentry.ca](http://www.bkicarpentry.ca). Call Bill Klyn Carpentry Inc. 519-424-2816.

**SNOW REMOVAL:** minimum \$20 for snow removal. Also junk removal and small indoor renovations. 519-421-3150.

**Tillsonburg Power & Sail Squadron**  
is Hosting a  
**TORONTO BOAT SHOW BUS TRIP**  
Sat Jan 16, 2016

Bus Leaves at 9:30 am From Quality Inn Woodstock  
Returning at 9:00 pm - Quality Inn Woodstock.

**\$35<sup>00</sup> Per Person - Includes Bus & Show Ticket**

For More Information  
Call ERIC at 519-537-8945 or  
JOAN at 1-519-842-5618



General Help Wanted    General Help Wanted    General Help Wanted    General Help Wanted

*We are a progressive privately owned and operated business in Woodstock Ontario that is growing to meet our increased customer needs.*

***We have an immediate opening for two full time positions.***

**\*\* Steel Production Welder & Welder Fitter \*\***  
(Small / Medium sized Weldments)

**Qualified applicants need to possess the following as a minimum.**

- Minimum 2-3 years current experience as a Steel Production Welder and or Steel Welder Fitter.
- Certified or Certifiable to CWB.
- Proven experience in Hardwire MIG, Pulse and Metal Cored processes (A weld test will be required as part of the interview process)
- Technical background would be an asset.
- Ability to read and understand imperial and metric engineering drawings.
- Ability to work with minimal supervision.
- Desire to succeed and grow.
- Ability to work day shifts and or afternoon shifts.

For the right person advancement in this department is very possible.

**We can offer the following Remuneration**

**An Excellent Wage Base**

Starting rate \$19.00/hr to \$20.00/hr with a wage review after 90 day probation period.

**Benefits**

Complete benefits package enrolment after successful completion of our 90-day probation period.

**Company sponsored Pension Plan.**

To commence after 12 months employment.

Reply to: Box 491, c/o Sentinel Review, 16 Brock St. Woodstock, Ont N4S 3B4

*We will only be contacting those applicants we feel could fill these positions.*

Thank you in advance for submitting your resume.

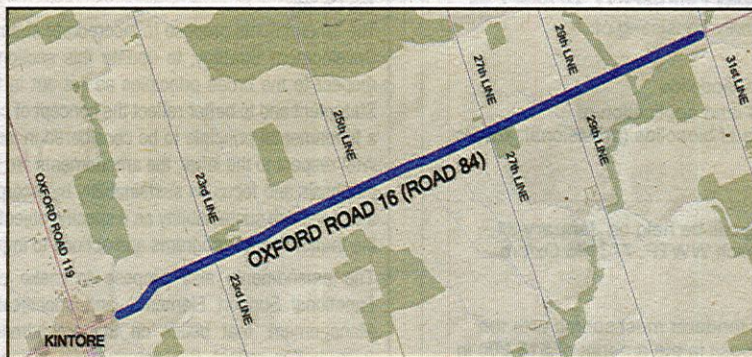
Public Notices    Public Notices    Public Notices    Public Notices    Public Notices



**Public Notice**

**NOTICE OF PUBLIC CONSULTATION CENTRE #2  
CLASS ENVIRONMENTAL ASSESSMENT (CLASS EA)**

**OXFORD ROAD 16 (Road 84) Improvements, from Kintore to 31st Line**



Oxford County is conducting a Class Environmental Assessment (Class EA) for Oxford County Road 16 (Road 84), from Kintore to 31st Line (see map), to consider options for transportation corridor improvements to satisfy future travel demands on Oxford Road 16 (Road 84).

In order to best address travel demands along Oxford County Road 16 (Road 84), a number of road improvement alternatives are being examined as part of the study including road widening, pedestrian and cycling facilities and over-all traffic operations, as well as the impact of such improvements on the social and natural environments. The study is being conducted in accordance with Schedule C of the Municipal Class Environmental Assessment (October 2000, amended 2007 & 2011), which is approved under the Ontario Environmental Assessment Act. The study will define the problem or opportunity, identify and evaluate alternative solutions, and determine a preferred solution in consultation with area stakeholders, regulatory agencies and the public.

Public and review agency consultation is a key element of the Class EA process. Interested members of the public, businesses and agencies are encouraged to attend the second Public Consultation Centre (PCC #2) to view and provide input on the alternative solutions for part of Oxford Road 16.

**WHEN:** Tuesday, January 26, 2016, from 7:00 pm to 8:30 p.m.

**WHERE:** Chalmers United Church, 842989 Road 84, Kintore, Ontario

Upon completion of the study, an Environmental Study Report will be prepared and placed on public record for a 30-day review period. The document will detail the planning process and the preferred alternative.

We are interested in hearing any comments or input that you may have about this study. For further information, please contact:

**Dadean Assam, P.Eng.**, Oxford County Public Works Dept.  
21 Reeve Street, P.O. Box 1614, Woodstock, Ontario N4S 7Y3  
519-539-9800, ext. 3117, or [dassam@oxfordcounty.ca](mailto:dassam@oxfordcounty.ca)

*Information will be collected according to the Municipal Freedom of Information and Protection of Privacy Act. With exception of personal information, all comments will be part of public record.*

**Robert Walton, P.Eng.**  
Director of Public Works

[oxfordcounty.ca](http://oxfordcounty.ca)



Public Notices    Public Notices    Public Notices    Public Notices



**City of Woodstock  
2016 Dog tags now available**

- Dog Tags are available at Woodstock City Hall (Main Floor), 500 Dundas Street, Monday - Friday 8:30 a.m. - 4:30 p.m.
- If you are unable to attend during business hours, ensure the information on your invoice is correct. If you did not receive an invoice you may print the dog tag registration application from the City of Woodstock website and include spayed/neutered verification. Enclose the completed form/invoice and payment in an envelope and deposit in the mail slot beside the Reeve Street door. Your tag and receipt will be mailed to you.
- All dog owners are required to register their dog(s) with the City of Woodstock. Dog owners who do not register their dog by January 31 of each year may be subject to a fine.
- For more information please call 519-539-1291 or visit the City of Woodstock website. [www.cityofwoodstock.ca](http://www.cityofwoodstock.ca)

**CALL US  
FIRST  
TO SELL IT  
FAST**

**REACH  
MORE With  
Targeted Local  
Advertising**

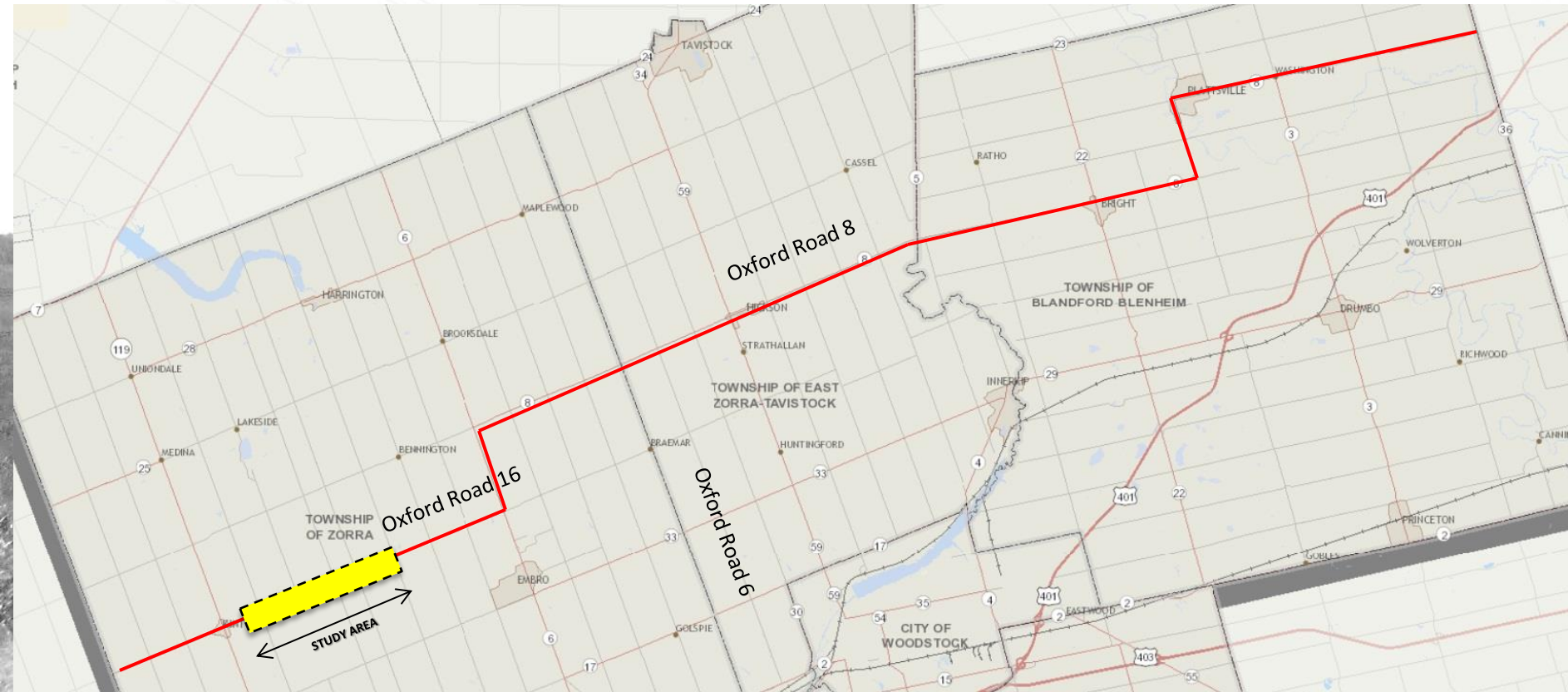
# **Oxford County Road 16 Improvements Kintore to 31<sup>st</sup> Line Class Environmental Assessment**

**Public Consultation Centre #2  
Chalmers United Church – Kintore  
January 26, 2016**

# Why are we here?

- Oxford Road 16 has been identified by the County as an East-West transportation corridor across the County.

(Oxford Road 16  $\longleftrightarrow$  Oxford Road 6  $\longleftrightarrow$  Oxford Road 8)



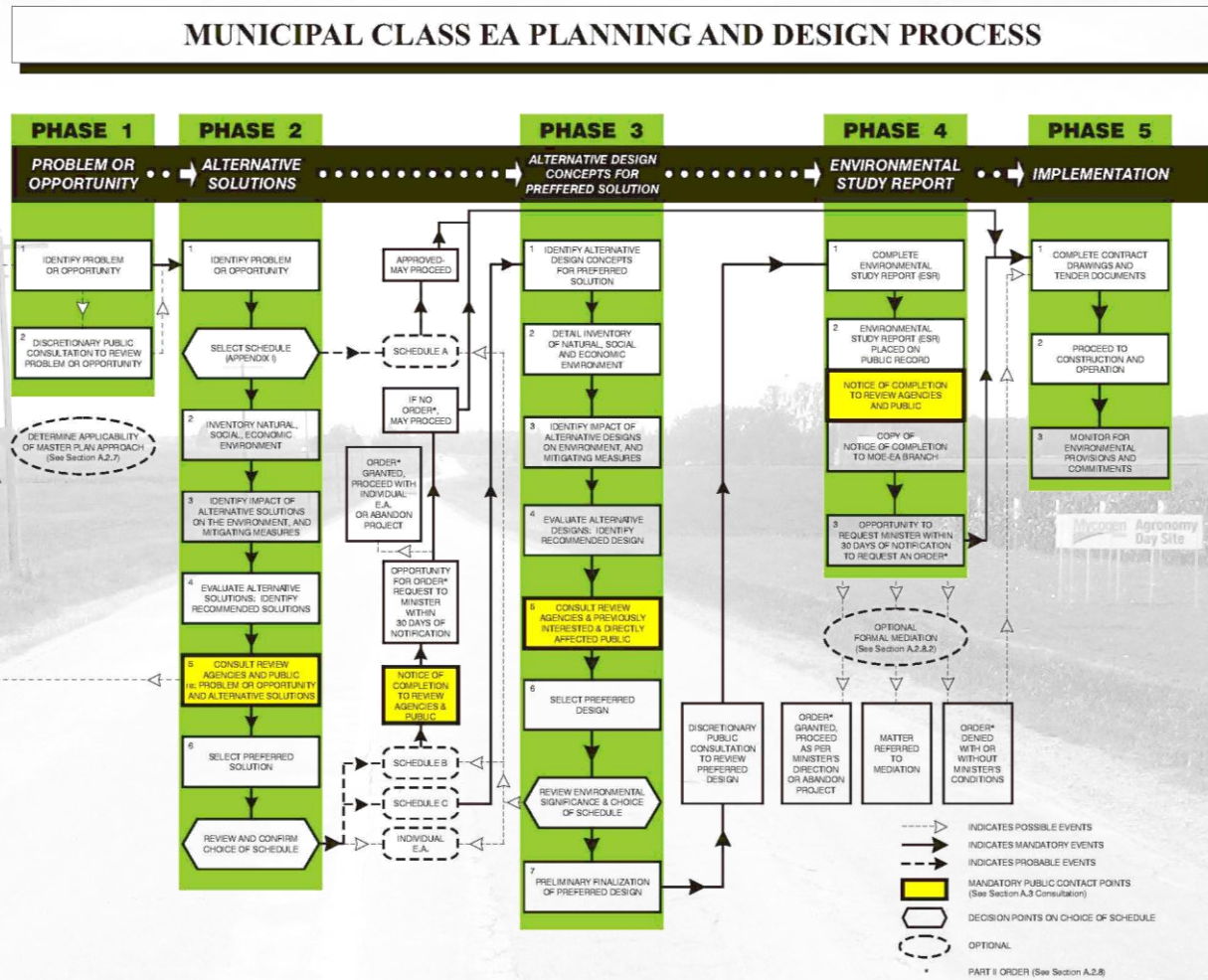
# Study Area

- Oxford Road 16 has been identified by the County as an East-West transportation corridor across the County (Oxford Road 16 ↔ Oxford Road 6 ↔ Oxford Road 8)
- The County is looking at road improvements for safety and ease of maintenance.
- The purpose of this Public Consultation Centre is to gather input from the public, property owners and stakeholders for use in the planning process.



# Purpose of Municipal Class EA

- Identify Problem or Opportunity
- Consult with Stakeholders
- Consider Alternative Solutions
- Assess impacts of alternative solutions on the environment,
- Determine a preferred solution.
- This project is following a 'Schedule C' Class EA (see figure).



# Technical Studies

A number of technical studies have been completed or are in the process of completion for this Class EA, and their findings are summarized below:

## **Collision Reports**

- Police collision records from 2006 to 2014 were reviewed. A total of 35 collisions were reported to the Police. 20 were single vehicle accidents due to loss of control. 8 were collisions with animals and 7 collisions involved two vehicles.

## **Archaeological and Built Heritage Assessment**

- The Stage 1 Archaeological report has been submitted to the Ministry of Tourism, Culture and Sport (MTCS) for their review.
- Some archaeological potential exists on the undisturbed portions of the Right-of-Way (i.e. grassed areas). A Stage 2 Archaeological Assessment is recommended to be completed if work will be done on the undisturbed areas of the Right-of-Way (ROW).
- A Built Heritage Assessment Checklist has been completed as required by MTCS. There were no built heritage resources identified along this portion of Oxford Road 16.

## **Drainage**

- There are 4 municipal drains, one private drain and one creek crossing. When the snow melts in the Spring and/or after heavy rainfalls, flooding sometimes occur at one location. This is one of the locations that drainage improvement is required.



# Technical Studies (Cont'd)

## **Natural Environment Characterization Report**

- This portion of the Oxford Road 16 is in the Middle Thames River watershed, which is under the jurisdiction of the Upper Thames River Conservation Authority (UTRCA).
- A draft version of the report has been completed and provided to Oxford County.
- No Species at Risk (SAR) were confirmed within the study area, but candidate habitat for several SAR was identified within the study area.
- Additional investigations are recommended once the preferred alternative is determined.

## **Geotechnical Investigation**

- Boreholes, up to 2 metres deep-, were completed along the study area for this Class EA.
- The existing road consists of 75mm to 225mm of asphalt, 300mm to 700mm of granular materials and sandy silt below.
- The report recommends improvement to the pavement structure to carry the current traffic loading.

## **Traffic Volumes**

- The traffic count in 2012/2013 was 2,483 vehicles per day. Assuming 1.5% increase in vehicle traffic per year, the traffic volume in 20 years is estimated to be 3,344.

# Problem/Opportunity Statement

After completing a review of relevant background information and reviewing the Technical Studies and traffic operations, the problem statement can be identified as follows:

*There is a need for improved roadway and traffic operations throughout the Oxford Road 16 corridor in order to improve safety for all road users travelling along the roadway.*

*Corridor improvements are required in order to satisfy the goals and objectives of the Transportation Master Plan, as well as provide a safe access for all road users.*

# Alternative Solutions

1. ***Do nothing:*** Status quo with no improvements to corridor operations. This alternative is used as a “benchmark” in which all other alternatives are compared. This alternative does not address the identified issues along the corridor. Estimated Construction Cost = \$0
2. ***Rehabilitate existing road and maintain existing road width and alignments:*** This alternative consists of removal of the existing asphalt from the road down to the granular base and placement of two layers of new asphalt or cold recycle the existing asphalt and overlay with new asphalt. Estimated Construction Cost = \$3,500,000.
3. ***Reconstruct and maintain existing road width and alignments:*** This alternative consists of removal of existing asphalt and granular material to native soil and rebuilding the roadway with new granular materials and asphalt. Estimated Construction Cost = \$3,900,000.
4. ***Reconstruct road to a wider 2-lane rural cross-section, including realignments and drainage improvements:*** This alternative consists of widening the existing travelled lane widths and gravel shoulders. Realigning the horizontal and vertical curves were required. Improve drainage. Estimated Construction Cost = \$5,000,000, including property acquisitions and utility relocations.

Evaluation Criteria and Sub-Factors		Part of Oxford Road 16 Improvements Class EA - Alternative Solutions			
		Alternative 1: Do Nothing	Alternative 2: Rehabilitate Existing Road Surface	Alternative 3: Reconstruct Road with no Re-alignment and Drainage Improvements	Alternative 4: Reconstruct Road with New Cross-Section including Alignment and Drainage Improvements
Transportation Environment	Traffic Operations				
	Safety				
	Road Geometry				
Social Environment	Impacts to Residential Properties				
	Impacts to Agricultural Properties				
Natural Environment	Impacts to Vegetation/Trees				
	Stormwater/ Drainage				
	Noise Impact				
Cost Estimate	Construction	\$0	\$3,500,000	\$3,900,000	\$5,000,000
	Maintenance				
Summary					



# Thanks for Attending!

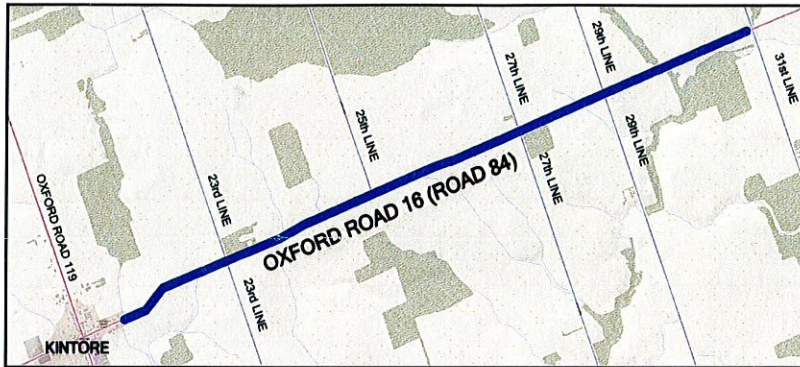
Please provide your comments by completing a comment sheet and returning it to us. You can also mail, fax, or email your comment sheet **by March 21, 2016.**

If you have any questions or comments, please contact:

**Dadean Assam, P. Eng.**  
**Manager of Construction**  
**Oxford County**  
**Public Works Department**  
**21 Reeve Street, P.O. Box 1614**  
**Woodstock, Ontario N4S 7Y3**  
**Tel: 519-539-9800 Ext. 3117**  
**Fax: 519-421-4711**  
**dassam@oxfordcounty.ca**

**NOTICE OF PUBLIC CONSULTATION CENTRE #2  
CLASS ENVIRONMENTAL ASSESSMENT (CLASS EA)**

**OXFORD ROAD 16 (Road 84) Improvements, from Kintore to 31st Line**



Oxford County is conducting a Class Environmental Assessment (Class EA) for Oxford County Road 16 (Road 84), from Kintore to 31st Line (see map), to consider options for transportation corridor improvements to satisfy future travel demands on Oxford Road 16 (Road 84).

In order to best address travel demands along Oxford County Road 16 (Road 84), a number of road improvement alternatives are being examined as part of the study including road widening, pedestrian and cycling facilities and over-all traffic operations, as well as the impact of such improvements on the social and natural environments. The study is being conducted in accordance with Schedule C of the Municipal Class Environmental Assessment (October 2000, amended 2007 & 2011), which is approved under the Ontario Environmental Assessment Act. The study will define the problem or opportunity, identify and evaluate alternative solutions, and determine a preferred solution in consultation with area stakeholders, regulatory agencies and the public.

Public and review agency consultation is a key element of the Class EA process. Interested members of the public, businesses and agencies are encouraged to attend the second Public Consultation Centre (PCC #2) to view and provide input on the alternative solutions for part of Oxford Road 16.

**WHEN:** Tuesday, January 26, 2016, from 7:00 pm to 8:30 p.m.

**WHERE:** Chalmers United Church, 842989 Road 84, Kintore, Ontario

Upon completion of the study, an Environmental Study Report will be prepared and placed on public record for a 30-day review period. The document will detail the planning process and the preferred alternative.

We are interested in hearing any comments or input that you may have about this study. For further information, please contact:

**Dadean Assam, P.Eng.**, Oxford County Public Works Dept.  
21 Reeve Street, P.O. Box 1614, Woodstock, Ontario N4S 7Y3  
519-539-9800, ext. 3117, or [dassam@oxfordcounty.ca](mailto:dassam@oxfordcounty.ca)

*Information will be collected according to the Municipal Freedom of Information and Protection of Privacy Act. With exception of personal information, all comments will be part of public record.*

**Robert Walton, P.Eng.**  
Director of Public Works

[oxfordcounty.ca](http://oxfordcounty.ca)



COUNTY OF OXFORD  
CAO/CLERK'S OFFICE  
RECEIVED

JAN - 6 2016

REFER TO

*Rob W*

File/EDMS:

---

**From:** Karen Winfield <winfieldk@thamesriver.on.ca>  
**Sent:** September-02-16 2:24 PM  
**To:** Dadean Assam; Mike Hughes  
**Cc:** Mark Shifflett; Mark Snowsell  
**Subject:** 843009 Road 84, Zorra, 190 John St, Kintore  
**Attachments:** 843009 Road 84, Kintore, Zorra.pdf

Hi Mike/Dadean,

Please see attached UTRCA mapping of property located at 843009 Road 84 in the Township of Zorra - noting mapping should be printed landscape on legal size (8 1/2 x 14 inch) paper for scales to be accurate.

Just got off the phone with the landowner. He advised:

- there have been problems with flooding at his property since the downstream neighbour installed the field culvert - before he purchased the property.
- previous landowner of 843009 apparently advised his basement/crawl space flooded after the field culvert at 843002 was installed.
- thinks downstream neighbour was originally told to install an 8' culvert but only installed 6'. (I'm not sure what the size of that culvert is btw...)
- the road is a County road and the road culvert may be undersized as well. (He had other concerns about this culvert related to truck traffic, stability of the culvert with heavy truck traffic and where they brake in relation to the Kintore corner... but I will leave that up to Dadean.) He is under the impression the County will be redoing the road next year - advised he was working out of town during the last meeting and was unable to attend but he would like this culvert looked at.
- has experienced more flooding since more agricultural lands upstream have field tiled.
- during the last flood he noted the bottleneck appears to be the field culvert and the County culvert as it was backing up the banks upstream of both culverts but was running with no issues or bank flooding downstream of the culverts.

Advised the landowner I would touch base with both the County and the Township for:

**Dadean** - Is this a County Road? Are there plans to redo the road next year and is the County by any chance assessing this culvert?

**Mike** - Is the agricultural field culvert at 843002 Road 84 part of the Engineer's Report for the Municipal Drain or is it a private structure? Did any correspondence ever go into the Township drain file about sizing of the culvert.... do you know if it was sized as proposed? (I don't think our office has any info about this culvert as looks like it has been there for at least 15 years according to our aerial photography...)

Please advise.

Thank-you,

Karen W.

>>> Mark Shifflett 26/08/2016 1:25 PM >>>  
Karen,

Received phone call through our emergency flood line.....

Mike Stachelski?

519 215 2866

190 John St, Kintore

Rd 84

emergency #843009

Sounded like a residential house on Silver? Creek.

Flooded last night in intense rain.

Blaming an undersized downstream culvert on his neighbour (agricultural) property.

Sounded like there was a history of dispute over this culvert.

He also had concerns of road culvert.

Suggested that someone could call him back next week to discuss..... seemed ok with that.

Mark Shifflett

**<The contents of this e-mail and any attachments are intended for the named recipient(s). This e-mail may contain information that is privileged, confidential and/or exempt from disclosure under applicable law. If you have received this message in error, are not the named recipient(s), or believe that you are not the intended recipient immediately notify the sender and permanently delete this message without reviewing, copying, forwarding, disclosing or otherwise using it or any part of it in any form whatsoever.>**

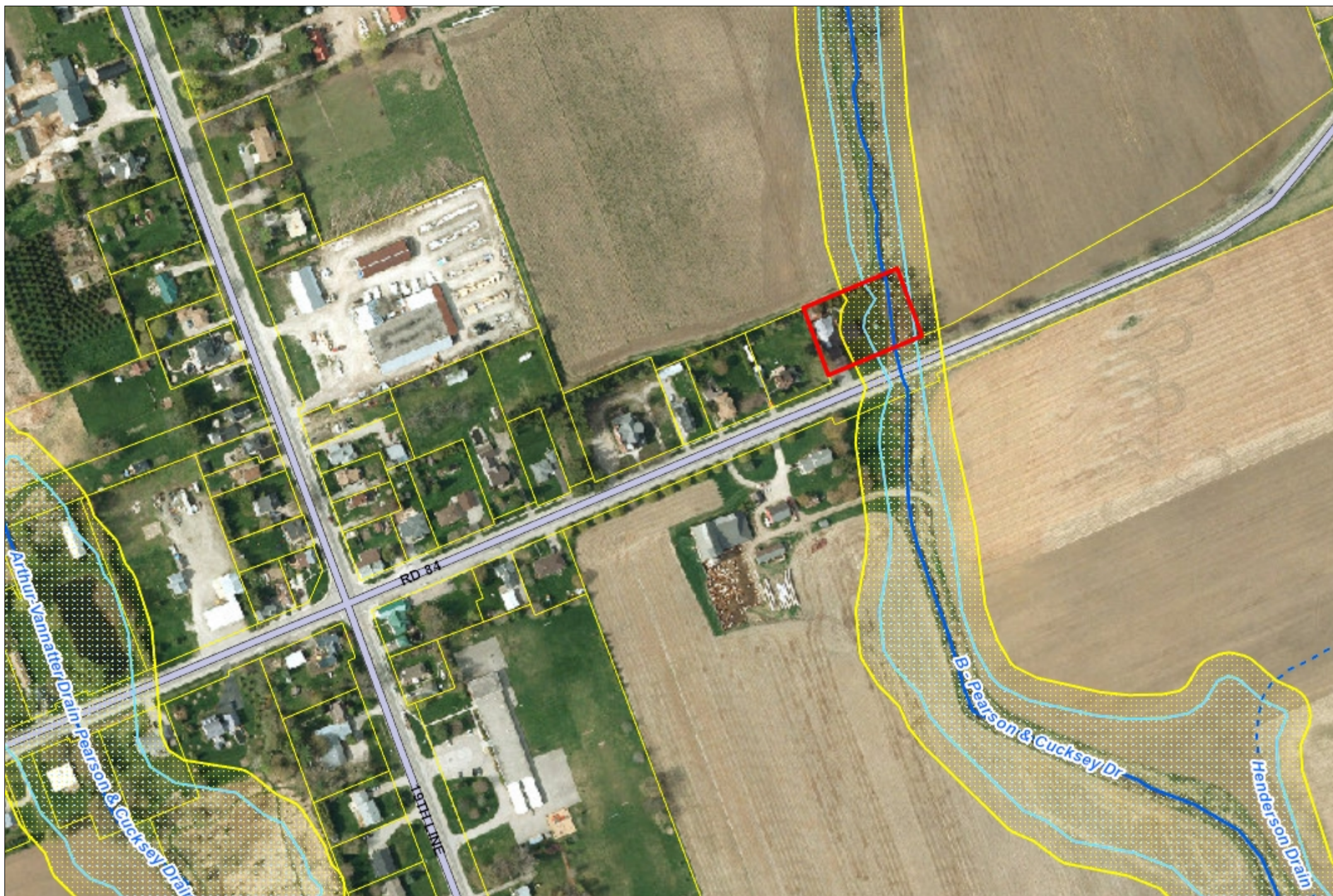


# Regulation Limit

Regulation under s.28 of the *Conservation Authorities Act*  
Development, interference with wetlands, and alterations  
to shorelines and watercourses. O.Reg 157/06, 97/04.

## Legend

- Watercourse
  - Open
  - - Tiled
- Flooding Hazard
- Regulation Limit 2015
- Assessment Parcel (MPAC)



The Regulation Limit depicted on this map schedule is a representation of O.Reg 157/06 under O.Reg 97/04.

The Regulation Limit is a conservative estimation of the hazard lands within the UTRCA watershed. Depending on the specific characteristics of the hazard land and the land use proposed, the Regulation Limit may be subject to change.

The UTRCA disclaims explicitly any warranty, representation or guarantee as to the content, sequence, accuracy, timeliness, fitness for a particular purpose, merchantability or completeness of any of the data depicted and provided herein.

The UTRCA assumes no liability for any errors, omissions or inaccuracies in the information provided herein and further assumes no liability for any decisions made or actions taken or not taken by any person in reliance upon the information and data furnished hereunder.

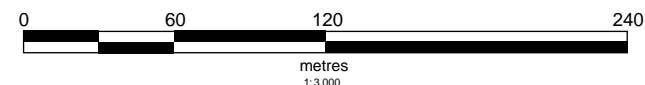
This map is not a substitute for professional advice. Please contact UTRCA staff for any changes, updates and amendments to the information provided.

This document is not a Plan of Survey.

Sources: Base data, 2010 Aerial Photography used under licence with the Ontario Ministry of Natural Resources Copyright © Queen's Printer for Ontario; City of London.

Notes:  
843009 Road 84, Kintore, Township of Zorra  
Mapping prepared to denote location only.  
Created By: KMW September 2, 2016

\* Please note: Any reference to scale on this map is only appropriate when it is printed landscape on legal-sized (8.5" x 14") paper.



UPPER THAMES RIVER

CONSERVATION AUTHORITY

Copyright ©2016 UTRCA.

## Public Consultation Centre #2

January 26, 2016, 7:00pm to 8:30pm

### CLASS ENVIRONMENTAL ASSESSMENT

Oxford Rd 16 (Road 84) Improvements, from Kintore to 31<sup>st</sup> Line

Comments/questions by Public after County's presentation (Notes by F Gross)

- provide a map of Alternative #4
- what is life span of Alternative #2 to #4?; Answer: 10yrs for Alternative #2, 20 yrs for Alternative #3 and #4
- hill at 'McCalls' corner
- 31<sup>st</sup> Line sight lines; gravel trucks and roof truss trucks (heading east) turn right at 31<sup>st</sup> Line and go south to Road 78 across to Innerkip
- cost savings alternative #3 vs #4, Answer: we will look at cost benefits
- we are getting more rain than in the past
- there is no economic benefit to Oxford in having an east west corridor
- gravel source for road construction; north or south of the 401?
- where will utility poles be relocated? Answer: within right of way
- would it be possible for natural gas line to be installed? Answer: we will consider during design
- is London promoting traffic to use this route?
- will load restrictions remain? Answer: no, not with Alternative #3 or #4
- detour during construction?
- what are % trucks?
- County comment: part of construction may proceed in 2017; work may be completed in 3 phases
- A property owner moves feed from 23<sup>rd</sup> Line to across from Church;
- Any thought of installing deer warning lights to warn drivers of deer in the area?
- Some drivers attempting to stop on the shoulders sometimes enter the ditch because the shoulders are narrow
- Traffic detours may be a challenge when the Road is closed for construction.

#### Notes marked on map:

- WM. Ross Award Drain – flooding has occurred on south side of road
- At Lot 16, Concession 1 – can ditch (north side) flow to west?
- At Lot 15, Concession 1 – concerns with water running
- Bell telephone lines partly overhead from Zorra 25<sup>th</sup> to 27<sup>th</sup> and partly buried

---

**From:** Aden Corcoran  
**Sent:** January-29-16 9:07 AM  
**To:** Dadean Assam  
**Subject:** County Road 16

Hi Dadean,

Hope all is well with you.

I was busy and unable to attend the PIC for the work you are planning on your Road 16. I do have a comment.

The sightlines at the intersection of CR 16 and Township of Zorra 29<sup>th</sup> Line are very poor. I would like to see this situation improved at this intersection as part of the project design.

Any questions or comments, please contact me.

Aden Corcoran, C.E.T.  
Director of Public Works  
Township of Zorra  
(519) 485-2490 ext 227 or 1-888-699-3868  
(519) 485-2520 fax  
[acorcoran@zorra.on.ca](mailto:acorcoran@zorra.on.ca)  
[www.zorra.on.ca](http://www.zorra.on.ca)

This email communication is CONFIDENTIAL AND LEGALLY PRIVILEGED. If you are not the intended recipient, please notify me at the telephone number shown above or by return email and delete this communication and any copy immediately. Thank you.

 ***Please consider the environment before printing this e-mail.***

733 Exeter Road  
London ON N6E 1L3  
Tel: 519 873-5000  
Fax: 519 873-5020

733, rue Exeter  
London ON N6E 1L3  
Tél.: 519 873-5000  
Fax: 519 873-5020

---

January 11<sup>th</sup>, 2016

Oxford County Public Works  
21 Reeve Street  
P.O. Box 1614  
Woodstock, Ontario  
N4S 7Y3

Attention: Mr. Dadean Assam, P. Eng.  
Manager of Construction

**Re: Notice of Public Consultation Centre #2, Oxford Road 16 (Road 84) Improvements,  
From Kintore to 31<sup>st</sup>, Line**

---

Dear Mr. Assam:

This letter is this ministry's response to the Notice of Public Information Centre #2 for the above noted project. This response acknowledges that this study is being completed following the Municipal Engineers Association Municipal Class EA.

Thank you for the opportunity to comment on this project.

As you know, the Class EA planning process includes consultation with interested stakeholders, evaluation of alternatives, assessment of the effects of the proposed works and identification of measures to mitigate any adverse impacts. In addition to public agencies, and the general public, consultation with First Nations and Metis is required.

#### **Consultation with First Nation and Metis Communities**

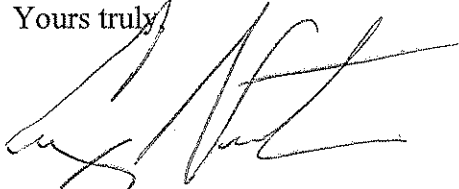
The Crown has a duty to consult First Nation and Metis communities if there is a potential impact to Aboriginal or treaty rights. As the proponent of this project, the County of Oxford has a responsibility to conduct adequate consultation with First Nation and Metis communities as part of the environmental assessment process. The Crown is therefore, delegating the procedural aspects of consultation to the County of Oxford as outlined in the attached document.

---

The County of Oxford must contact the Director, Environmental Approvals Branch if this project may adversely affect an Aboriginal or treaty right. The Ministry will then determine whether the Crown has a duty to consult. Information and resources to assist the County of Oxford in fulfilling this requirement are provided as an attachment.

Please keep this office fully informed of the status of this project as it proceeds through the Class EA process. Thank you in advance.

Yours truly,

A handwritten signature in black ink, appearing to read 'Craig Newton', written over a horizontal line.

Craig Newton  
Regional Environmental Planner / Regional EA Coordinator  
Ministry of the Environment & Climate Change  
Southwestern Region  
(519) 873-5014

Attachment (1)

## ABORIGINAL CONSULTATION INFORMATION

### *Consultation with Interested Persons under the Ontario Environmental Assessment Act*

Proponents subject to the Ontario *Environmental Assessment Act* are required to consult with interested persons, which may include First Nations and Métis communities. In some cases, special efforts may be required to ensure that Aboriginal communities are made aware of the project and are afforded opportunities to provide comments. Direction about how to consult with interested persons/communities is provided in the Code of Practice: Consultation in Ontario's Environmental Assessment Process available on the Ministry's website:

<https://www.ontario.ca/environment-and-energy/consultation-ontarios-environmental-assessment-process>

As an early part of the consultation process, proponents are required to contact the Ontario Ministry of Aboriginal Affairs' Consultation Unit and visit Aboriginal Affairs and Northern Development Canada's Aboriginal and Treaty Rights Information System (ATRIS) to help identify which First Nation and Métis communities may be interested in or potentially impacted by their proposed projects.

ATRIS can be accessed through the Aboriginal Affairs and Northern Development Canada website:

[http://sidaft-atris.aadnc-aandc.gc.ca/atris\\_online/](http://sidaft-atris.aadnc-aandc.gc.ca/atris_online/)

For more information in regard Aboriginal consultation as part of the Environmental Assessment process, refer to the Ministry's website:

[www.ontario.ca/government/environment-assessments-consulting-aboriginal-communities](http://www.ontario.ca/government/environment-assessments-consulting-aboriginal-communities)

You are advised to provide notification directly to all of the First Nation and Métis communities who may be interested in the project. You should contact First Nation communities through their Chief and Band Council, and Métis communities through their elected leadership.

### *Rights-based consultation with First Nation and Métis Communities*

Proponents should note that, in addition to requiring interest-based consultation as described above, certain projects may have the potential to adversely affect the ability of First Nation or Métis communities to exercise their established or credibly asserted Aboriginal or treaty rights. In such cases, Ontario may have a duty to consult those Aboriginal communities.

Activities which may restrict or reduce access to unoccupied Crown lands, or which could result in a potential adverse impact to land or water resources in which harvesting rights are exercised, may have the potential to impact Aboriginal or treaty rights. For assistance in determining whether your proposed project could affect these rights, please refer to the attached "Preliminary Assessment Checklist: First Nation and Métis Community Interest."

If there is likely to be an adverse impact to Aboriginal or treaty rights, accommodation may be required to avoid or minimize the adverse impacts. Accommodation is an outcome of consultation and includes any mechanism used to avoid or minimize adverse impacts to Aboriginal or treaty rights and traditional uses. Solutions could include mitigation such as

v.1.14.0

adjustments in the timing or geographic location of the proposed activity. Accommodation may in certain circumstances involve the provision of financial compensation, but does not necessarily require it.

For more information about the duty to consult, please see the Ministry's website at:

[www.ontario.ca/government/duty-consult-aboriginal-peoples-ontario](http://www.ontario.ca/government/duty-consult-aboriginal-peoples-ontario)

The proponent must contact the Director, Environmental Approvals Branch if a project may adversely affect an Aboriginal or treaty right, consultation has reached an impasse, or if a Part II Order or an elevation request is anticipated; the Ministry will then determine whether the Crown has a duty to consult.

The Director of the Environmental Approvals Branch can be notified either by email with the subject line "Potential Duty to Consult" to [EAASIBGen@ontario.ca](mailto:EAASIBGen@ontario.ca) or by mail or fax at the address provided below:

Email:	<a href="mailto:EAASIBGen@ontario.ca">EAASIBGen@ontario.ca</a> Subject: Potential Duty to Consult
Fax:	416-314-8452
Address:	Environmental Approvals Branch 125 St. Clair Avenue West, 1 <sup>st</sup> Floor Toronto, ON, M4V 1P5

#### *Delegation of Procedural Aspects of Consultation*

Proponents have an important and direct role in the consultation process, including a responsibility to conduct adequate consultation with First Nation and Métis communities as part of the environmental assessment process. This is laid out in existing environmental assessment codes of practice and guides that can be accessed from the Ministry's environmental assessment website at

[www.ontario.ca/environmentalassessments](http://www.ontario.ca/environmentalassessments)

The Ministry relies on consultation conducted by proponents when it assesses the Crown's obligations and directs proponents during the regulatory process. Where the Crown's duty to consult is triggered, various additional procedural steps may also be asked of proponents as part of their delegated duty to consult responsibilities. In some situations, the Crown may also become involved in consultation activities.

Ontario will have an oversight role as the consultation process unfolds but will be relying on the steps undertaken and information you obtain to ensure adequate consultation has taken place. To ensure that First Nation and Métis communities have the ability to assess a project's potential to adversely affect their Aboriginal or treaty rights, Ontario requires proponents to undertake certain procedural aspects of consultation.

The proponent's responsibilities for procedural aspects of consultation include:

- Providing notice to the elected leadership of the First Nation and/or Métis communities (e.g., First Nation Chief) as early as possible regarding the project;

- Providing First Nation and/or Métis communities with information about the proposed project including anticipated impacts, information on timelines and your environmental assessment process;
- Following up with First Nation and/or Métis communities to ensure they received project information and that they are aware of the opportunity to express comments and concerns about the project. If you are unable to make the appropriate contacts (e.g. are unable to contact the Chief) please contact the Environmental Assessment and Planning Coordinator at the Ministry's appropriate regional office for further direction.
- Providing First Nation and/or Métis communities with opportunities to meet with appropriate proponent representatives to discuss the project;
- Gathering information about how the project may adversely impact the relevant Aboriginal and/or Treaty rights (for example, hunting, fishing) or sites of cultural significance (for example, burial grounds, archaeological sites);
- Considering the comments and concerns provided by First Nation and/or Métis communities and providing responses;
- Where appropriate, discussing potential mitigation strategies with First Nation and/or Métis communities;
- Bearing the reasonable costs associated with these procedural aspects of consultation, which may include providing support to help build communities' capacity to participate in consultation about the proposed project.
- Maintaining a Consultation Record to show evidence that you, the proponent, completed all the steps itemized above or at a minimum made meaningful attempts to do so.
- Upon request, providing copies of the Consultation Record to the Ministry. The Consultation Record should:
  - summarize the nature of any comments and questions received from First Nation and/or Métis communities
  - describe your response to those comments and how their concerns were considered
  - include a communications log indicating the dates and times of all communications; and
  - document activities in relation to consultation.

Successful consultation depends, in part, on early engagement by proponents with First Nation and Métis communities. Information shared with communities must be clear, accurate and complete, and in plain language where possible. The consultation process must maintain sufficient flexibility to respond to new information, and we trust you will make all reasonable efforts to build positive relationships with all First Nation and Métis communities contacted. If you need more specific guidance on Aboriginal consultation steps in relation to your proposed project, or if you feel consultation has reached an impasse, please contact the Environmental Assessment and Planning Coordinator at the Ministry's appropriate regional office.



**Preliminary Assessment Checklist: First Nation and Métis Community Interests and Rights**

In addition to other interests, some main concerns of First Nation and Métis communities may pertain to established or asserted rights to hunt, gather, trap, and fish – these activities generally occur on Crown land or water bodies. As such, projects related to Crown land or water bodies, or changes to how lands and water are accessed, may be of concern to Aboriginal communities.

Please answer the following questions and keep related notes as part of your consultation record. "Yes" responses will indicate a potential adverse impact on Aboriginal or treaty rights.

Where you have identified that your project may trigger rights-based consultation through the following questions, you should arrange for a meeting between you and the Environmental Assessment and Planning Coordinator at the Ministry's appropriate regional office to provide an early opportunity to confirm whether Ontario's duty to consult is triggered and to discuss roles and responsibilities in that event.

	YES	NO
1. Are you aware of concerns from First Nation and Métis communities about your project or a similar project in the area? <i>The types of concerns can range from interested inquiries to environmental complaints, and even to land use concerns. You should consider whether the interest represents on-going, acute and/or widespread concern.</i>		
2. Is your project occurring on Crown land, or is it close to a water body? Might it change access to either?		
3. Is the project located in an open or forested area where hunting or trapping could take place?		
4. Does the project involve the clearing of forested land?		
5. Is the project located away from developed, urban areas?		
6. Is your project close to, or adjacent to, an existing reserve? <i>Projects in areas near reserves may be of interest to the First Nation and Métis communities living there.</i>		
7. Will the project affect First Nations and/or Métis ability to access areas of significance to them?		
8. Is the area subject to a land claim? <i>Information about land claims filed in Ontario is available from the Ministry of Aboriginal Affairs; information about land claims filed with the federal government is available from Aboriginal Affairs and Northern Development Canada.</i>		
9. Does the project have the potential to impact any archaeological sites?		



PUBLIC CONSULTATION CENTRE #2,  
JANUARY 26, 2016, 7:00 pm to 8:30 pm  
CLASS ENVIRONMENTAL ASSESSMENT  
Oxford Road 16 (Road 84) Improvements,  
From Kintore to 31<sup>st</sup> Line

PUBLIC COMMENT SHEET  
COUNTY OF OXFORD  
RECEIVED

JAN 27 2016

REFER TO \_\_\_\_\_  
FILE/ EDMS: \_\_\_\_\_

Name: \_\_\_\_\_

Address: \_\_\_\_\_

Email: \_\_\_\_\_

Comments/Questions/Suggestions: \_\_\_\_\_

If improvements to Oxford Road 16 are made traffic will travel faster than it already does.

Traffic in the village of Kintore going east or west can be seen doing 80 km.

Thank you for your input. Please complete and return your Comment Sheet by mail, fax, or email to:

Dadean Assam, P.Eng.,  
Manager of Construction,  
Phone: 519-539-9800 Ext 3117  
Email: [dassam@oxfordcounty.ca](mailto:dassam@oxfordcounty.ca)

Oxford County Public Works  
21 Reeve St, PO Box 1614  
Woodstock ON N4S 7Y3  
Fax: 519-421-4711



PUBLIC CONSULTATION CENTRE #2,  
JANUARY 26, 2016, 7:00 pm to 8:30 pm  
CLASS ENVIRONMENTAL ASSESSMENT  
Oxford Road 16 (Road 84) Improvements,  
From Kintore to 31<sup>st</sup> Line

**PUBLIC COMMENT SHEET**

Name: \_\_\_\_\_

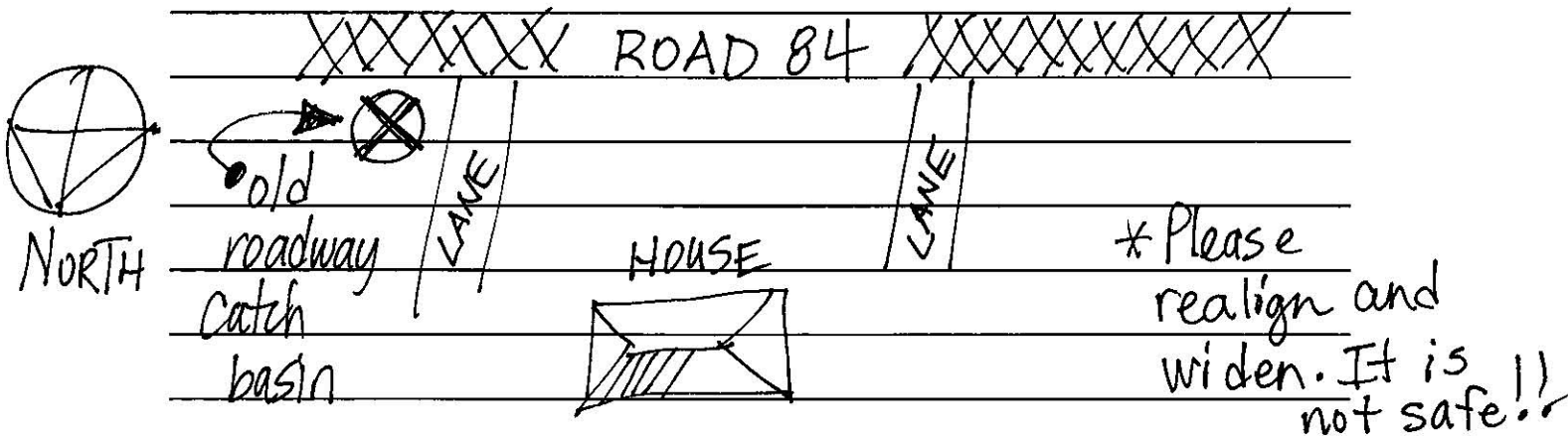
Address: \_\_\_\_\_

Email: \_\_\_\_\_

Comments/Questions/Suggestions: SPEEDING, Snowplows nailing mailboxes!

Drainage is a huge concern. Borland Drain is undersized at roadway and across McCall's field. Backs up to drain tile @ houses.

\* Also ancient catch basin at the front of our property needs to be filled



**Thank you for your input. Please complete and return your Comment Sheet by mail, fax, or email to:**

Dadean Assam, P.Eng.,  
Manager of Construction,  
Phone: 519-539-9800 Ext 3117  
Email: [dassam@oxfordcounty.ca](mailto:dassam@oxfordcounty.ca)

Oxford County Public Works  
21 Reeve St, PO Box 1614  
Woodstock ON N4S 7Y3  
Fax: 519-421-4711



Friday, September 16<sup>th</sup>, 2016

Subject: Ross and Borland Drains  
Township of Zorra/ County of Oxford

Dear Sir/Madam:

We have scheduled an informal meeting at the Zorra Township office, location of 274620 27<sup>th</sup> Line at Hwy 119 on Friday, September 30<sup>th</sup>, 2016 at 11 a.m.

This meeting is in regards to the Ross and Borland Drains to review the proposed work with the affected parties and the County of Oxford.

If you have any questions or concerns and are not able to attend the meeting please contact the undersigned.

Yours truly,

Mike Hughes, C.B.C.O.  
Drainage Superintendent  
Township of Zorra  
519-485-2490 x 222  
[mhughes@zorra.on.ca](mailto:mhughes@zorra.on.ca)



Public Works  
P.O. Box 1614, 21 Reeve Street, Woodstock, ON N4S 7Y3

COUNTY OF OXFORD  
RECEIVED

JAN 25 2016

REFER TO \_\_\_\_\_  
File/ EDMS: \_\_\_\_\_

ARTSDALE FARMS LTD  
RR 4  
THAMESFORD ON  
N0M 2M0

AI



RETURN TO SENDER  
RENOI A L'EXPEDITEUR

- Unclaimed  
Non réclamé
- No such address  
Adresse inexistante
- Address incomplete  
Adresse incomplète
- Moved / Unmoved  
Déménagé / Inconnu
- No such Post Office  
Bureau inexistant
- Refused by addressee  
Refusé par le destinataire