


Figure 5: Proposed Widening & Property Acquisitions





**Legend:**  
 LOCATION OF REQUIRED PROPERTY

**General Notes:**

**Utility Note:**  
 IT IS THE RESPONSIBILITY OF THE PLAN USER TO INFORM THEMSELVES OF THE EXACT LOCATION OF ALL POLES, LINES, CONDUITS, WATER MAINS, SEWERS, AND OTHER UNDERGROUND AND OVERHEAD UTILITIES AND STRUCTURES BEFORE COMMENCING WITH WORK. SUCH UTILITIES AND STRUCTURES ARE NOT NECESSARILY SHOWN ON THE DRAWINGS WHERE SHOWN THE ACCURACY OF THE POSITION IS NOT GUARANTEED. THE CONTRACTOR SHALL ASSUME LIABILITY FOR DAMAGES TO THE UTILITIES DURING CONSTRUCTION.

REVISIONS	No.	DATE	BY

Controlling B.M.

Consultant

Stamp

Design By: \_\_\_\_\_ Drawn By: S.A.M.  
 Approved By: \_\_\_\_\_ Checked By: F.G.  
 Date: AUGUST 2016 Hor: 1:1000  
 Scale: Vert.

**PROPERTY ACQUISITION  
 OXFORD RD 16  
 PROPERTY #1**

235923 23rd Line  
 P.I.N. 00197-0042

Stn: \_\_\_\_\_ To: \_\_\_\_\_

Contract No:

Dwg No:





**Legend:**

**General Notes:**

**Utility Note:**

IT IS THE RESPONSIBILITY OF THE PLAN USER TO INFORM THEMSELVES OF THE EXACT LOCATION OF ALL POLES, LINES, CONDUITS, WATER MAINS, SEWERS, AND OTHER UNDERGROUND AND OVERHEAD UTILITIES AND STRUCTURES BEFORE COMMENCING WITH WORK. SUCH UTILITIES AND STRUCTURES ARE NOT NECESSARILY SHOWN ON THE DRAWINGS. WHERE SHOWN THE ACCURACY OF THE POSITION IS NOT GUARANTEED. THE CONTRACTOR SHALL ASSUME LIABILITY FOR DAMAGES TO THE UTILITIES DURING CONSTRUCTION.

REVISIONS	No.	DATE	BY

**Controlling B.M.**

**Consultant:**

**Stamp:**

**Design By:**

**Approved By:**

Date: AUGUST 2016

Drawn By: S.A.M.

Checked By: F.G.

Scale: Hor: 1:1000  
Vert:

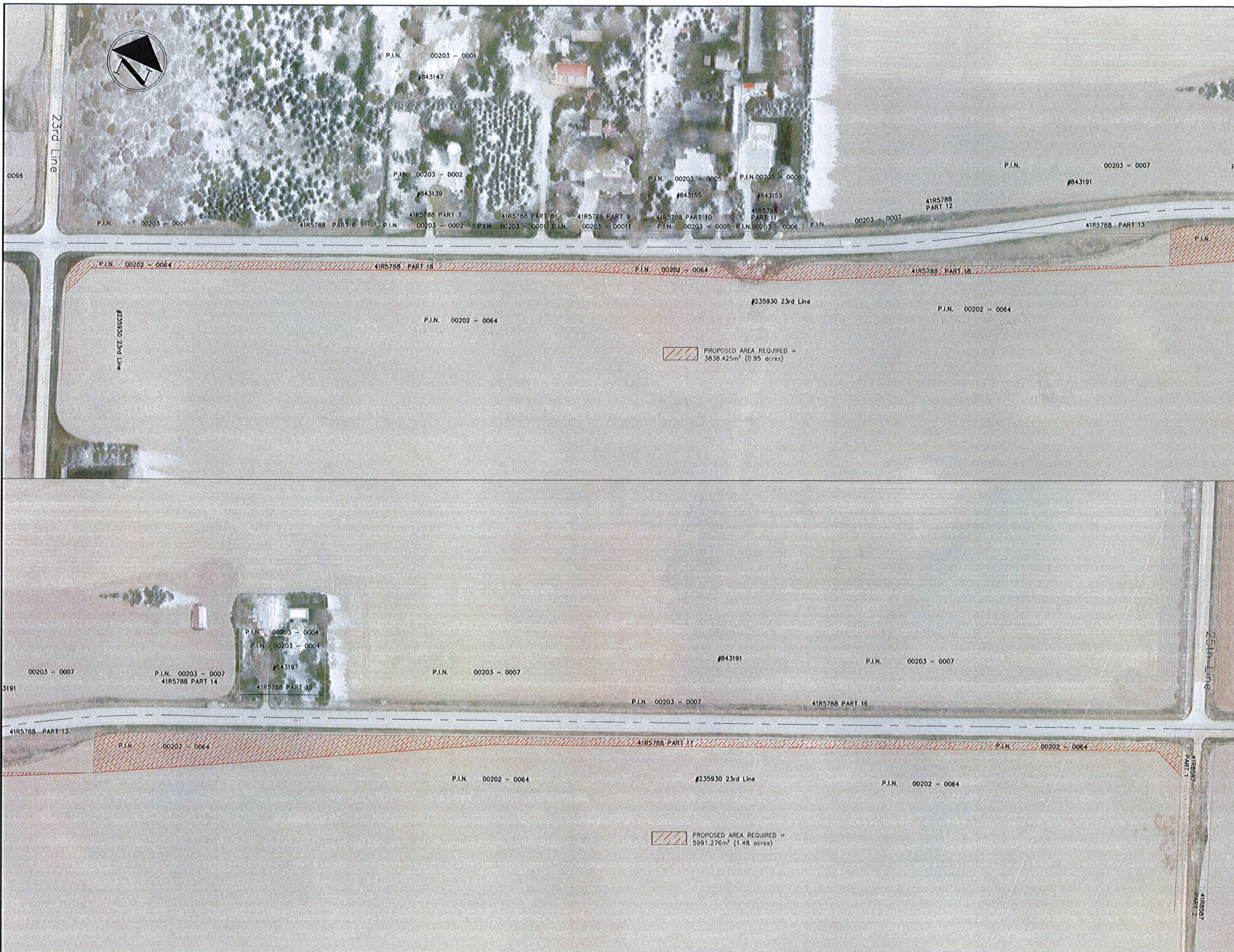
**PROPERTY ACQUISITION  
OXFORD RD 16  
PROPERTY #2**

235930 23rd Line  
P.I.N. 00202-0064

Stn: To:

Contract No:

Dwg No:



file: K:\Devil 3D Projects\105 930016 8300 CR16 2012\Project drawings\legal survey.dwg  
Date: 08/20/16 14:00  
User: saml



**Legend:**  
 LOCATION OF REQUIRED PROPERTY

**General Notes:**

**Utility Note:**  
 IT IS THE RESPONSIBILITY OF THE PLAN USER TO INFORM THEMSELVES OF THE EXACT LOCATION OF ALL POLES, LINES, CONDUITS, WATER MAINS, SEWERS, AND OTHER UNDERGROUND AND OVERHEAD UTILITIES AND STRUCTURES BEFORE COMMENCING WITH WORK. SUCH UTILITIES AND STRUCTURES ARE NOT NECESSARILY SHOWN ON THE DRAWINGS. WHERE SHOWN THE ACCURACY OF THE POSITION IS NOT GUARANTEED. THE CONTRACTOR SHALL ASSUME LIABILITY FOR DAMAGES TO THE UTILITIES DURING CONSTRUCTION.

REVISIONS	No.	DATE	BY

Controlling B.M.

Consultant:

Stamp

Design By:                      Drawn By: S.A.M.

Approved By:                    Checked By: F.G.

Date: AUGUST 2016            Scale: Hor: 1:1000  
Vert:

**PROPERTY ACQUISITION  
OXFORD RD 16  
PROPERTY #3**

843282 Oxford Rd 16  
P.I.N. 00202-0020

Stn:                                      To:

Contract No:

Dwg No:













**Legend:**  
 LOCATION OF REQUIRED PROPERTY

**General Notes:**

**Utility Note:**  
 IT IS THE RESPONSIBILITY OF THE PLAN USER TO INFORM THEMSELVES OF THE EXACT LOCATION OF ALL POLES, LINES, CONDUITS, WATER MAINS, SEWERS, AND OTHER UNDERGROUND AND OVERHEAD UTILITIES AND STRUCTURES BEFORE COMMENCING WITH WORK. SUCH UTILITIES AND STRUCTURES ARE NOT NECESSARILY SHOWN ON THE DRAWINGS. WHERE SHOWN THE ACCURACY OF THE POSITION IS NOT GUARANTEED. THE CONTRACTOR SHALL ASSUME LIABILITY FOR DAMAGES TO THE UTILITIES DURING CONSTRUCTION.

REVISIONS	No.	DATE	BY

Controlling B.M.

Consultant

Stamp: Stamp:

Design By: Drawn By: S.A.M.

Approved By: Checked By: F.G.

Date: AUGUST 2016 Scale: Hbr: 1:500  
Vert:

**PROPERTY ACQUISITION  
OXFORD RD 16  
PROPERTY #6**

843540 Oxford Rd 16  
P.I.N. 00211-0015

Stn: To:

Contract No:

Dwg No:



file: X:\Civil\_20\Projects\105\_930016\_8000\_CR16\_2012\Project Drawings\legal\_survey.dwg  
 Date: 2016-08-18 14:36  
 User: fgraham





**Legend:**

 LOCATION OF REQUIRED PROPERTY

**General Notes:**

**Utility Note:**

IT IS THE RESPONSIBILITY OF THE PLAN USER TO INFORM THEMSELVES OF THE EXACT LOCATION OF ALL POLES, LINES, CONDUITS, WATER MAINS, SEWERS, AND OTHER UNDERGROUND AND OVERHEAD UTILITIES AND STRUCTURES BEFORE COMMENCING WITH WORK. SUCH UTILITIES AND STRUCTURES ARE NOT NECESSARILY SHOWN ON THE DRAWINGS. WHERE SHOWN THE ACCURACY OF THE POSITION IS NOT GUARANTEED. THE CONTRACTOR SHALL ASSUME LIABILITY FOR DAMAGES TO THE UTILITIES DURING CONSTRUCTION.

REVISIONS	No.	DATE	BY

Controlling B.M.

Consultant

Stamp:	Stamp:
Design By:	Drawn By: S.A.M.
Approved By:	Checked By: F.G.
Date: AUGUST 2016	Hor: 1500 Vert:

**PROPERTY ACQUISITION**  
**OXFORD RD 16**  
**PROPERTY #7**

843544 Oxford Rd 16  
P.I.N. 00211-0014

Stn:                      To:

Contract No:

Dwg No:





**Legend:**

 LOCATION OF REQUIRED PROPERTY

**General Notes:**

**Utility Note:**

IT IS THE RESPONSIBILITY OF THE PLAN USER TO INFORM THEMSELVES OF THE EXACT LOCATION OF ALL POLES, LINES, CONDUITS, WATER MAINS, SEWERS, AND OTHER UNDERGROUND AND OVERHEAD UTILITIES AND STRUCTURES BEFORE COMMENCING WITH WORK. SUCH UTILITIES AND STRUCTURES ARE NOT NECESSARILY SHOWN ON THE DRAWINGS, WHERE SHOWN THE ACCURACY OF THE POSITION IS NOT GUARANTEED. THE CONTRACTOR SHALL ASSUME LIABILITY FOR DAMAGES TO THE UTILITIES DURING CONSTRUCTION.

REVISIONS	No.	DATE	BY

Controlling B.M.

Consultant

Stamp

Design By: \_\_\_\_\_ Drawn By: S.A.M.  
Approved By: \_\_\_\_\_ Checked By: F.G.  
Date: AUGUST 2016 Scale: Hori: 1:1250  
Vert.

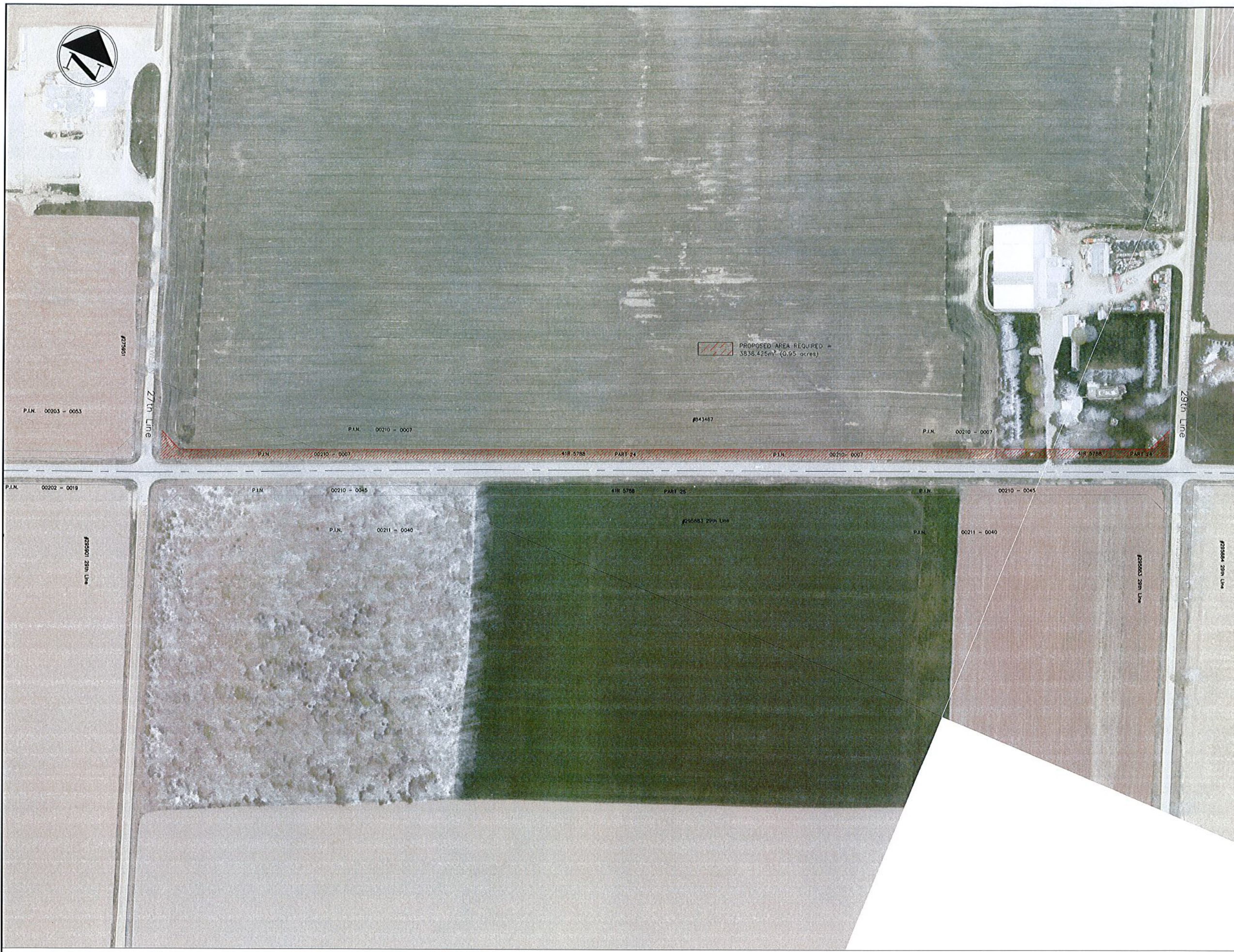
**PROPERTY ACQUISITION  
OXFORD RD 16  
PROPERTY #8**

843467 Oxford Rd 16  
P.I.N. 00210-0007

Stn: \_\_\_\_\_ To: \_\_\_\_\_

Contract No: \_\_\_\_\_

Dwg No: \_\_\_\_\_



file: K:\Civil 3D Projects\105-8300-016-8300-CR16 2012\Project drawings\ legal survey.dwg  
created: 8/1/2016 14:36  
date: Thu, 08/01/2016 14:36  
user: sregulinas





**Legend:**

 LOCATION OF REQUIRED PROPERTY

**General Notes:**

**Utility Note:**

IT IS THE RESPONSIBILITY OF THE PLAN USER TO INFORM THEMSELVES OF THE EXACT LOCATION OF ALL POLES, LINES, CONDUITS, WATER MAINS, SEWERS, AND OTHER UNDERGROUND AND OVERHEAD UTILITIES AND STRUCTURES BEFORE COMMENCING WITH WORK. SUCH UTILITIES AND STRUCTURES ARE NOT NECESSARILY SHOWN ON THE DRAWINGS. WHERE SHOWN THE ACCURACY OF THE POSITION IS NOT GUARANTEED. THE CONTRACTOR SHALL ASSUME LIABILITY FOR DAMAGES TO THE UTILITIES DURING CONSTRUCTION.

REVISIONS	No.	DATE	BY

Controlling B.M.

Consultant

Stamp

Design By: Drawn By: S.A.M.

Approved By: Checked By: F.G.

Date: AUGUST 2016 Scale: Hor: 1:1000  
Vert:


**PROPERTY ACQUISITION**  
**OXFORD RD 16**  
**PROPERTY #9**

**843301 Oxford Rd 16**  
**P.I.N. 00203-0025**

Stn: To:

Contract No:

Dwg No:

 PROPOSED AREA REQUIRED =  
3165.374m<sup>2</sup> (0.78 acres)

P.I.N. 00203 - 0025

#843301

P.I.N. 00203 - 0025

P.I.N. 00203 - 0025

41R5788 PART 19

P.I.N. 00202 - 0020

P.I.N. 00202 - 0020

#843282

P.I.N. 00202 - 0020

25th Line

41R597 PART 1

41R597 PART 2

41R5788 PART 23















