



BLANDFORD-BLENHEIM  
EAST ZORRA-TAVISTOCK  
INGERSOLL  
NORWICH  
SOUTH-WEST OXFORD  
TILLSONBURG  
ZORRA

# *wasteline*

OXFORD COUNTY WASTE MANAGEMENT SERVICES

SEPTEMBER 1, 2021 – AUGUST 31, 2022

# WHAT'S INSIDE

Wasteline.ca	1	South-West Oxford Recycling & Garbage Collection Map	8	Tips for Set Out Success	16-17
Oxford County	2	South-West Oxford Collection Dates	9	Future Oxford	18-19
Stay in the Know	3	Large Article Collection	10-11	Alternate Waste Options	20
Blue Box Collection	4	Waste Management and Education Centre	12-13	Departments and Services	21
What Goes Where?	5	Composting at Home	14	211 Ontario	22
Garbage Collection	6	Brush, Leaf and Yard Waste Depots	15	Emergency Planning	23
Garbage and Recycling Collection Maps	7			Pedestrian Crossovers	24
				Oxford County's Green Fleet Plan	25

# WASTELINE.CA

## Oxford's waste and recycling resource!

### WHAT YOU'LL FIND:

- Waste Management news
- When is my pickup?
- What goes where?
- Where to buy bag tags
- Waste sorting game

### STAY CONNECTED!

-  @OxfordWasteline
-  Oxford County
-  Oxford County

### ALSO AVAILABLE AS A SMARTPHONE APP!

View, print, or embed your calendar in Outlook, Google Calendar and iCal.

Sign up for reminders so you never miss your collection day!





*Growing stronger together*

Located in the heart of southwestern Ontario at the crossroads of Highways 401 and 403, Oxford County has a population of approximately 123,000 people across eight area municipalities that are “growing stronger together.” As a partnership-oriented, two-tier municipal government, Oxford County is emerging as a leader in sustainable growth through the Future Oxford Community Sustainability Plan and County Council’s commitment to achieving 100% renewable energy, becoming a zero waste community, and working towards zero poverty.

Situated in one of Ontario’s richest areas for farmland, agriculture is a key industry that serves as a springboard for some of the sustainable industries that are steadily diversifying the local economy. Oxford County offers a thriving local arts, culture and culinary community, as well as conservation parks, natural areas and more than 100 kilometres of scenic trails. The Oxford County Administration Building is located in Woodstock, Ontario. Visit [www.oxfordcounty.ca](http://www.oxfordcounty.ca) or follow our social media sites at [www.oxfordcounty.ca/social](http://www.oxfordcounty.ca/social).

# STAY IN THE KNOW

## ROAD CONSTRUCTION & NEW SUBDIVISIONS

During scheduled road construction, continue to place your garbage and recycling containers at the curb, as usual. If our vehicles are unable to access the area, our road work contractors will collect these items and move them to a central area for pick-up. Please mark your house number on garbage and recycling containers to ensure they are returned to the correct address.

New subdivisions can have a lot of construction vehicles blocking the roadways. If our vehicles cannot maneuver safely, please hold on to your material until the following week for collection.

## SERVICE INTERRUPTIONS

Collection changes or interruptions can happen at any time—for weather, road closures or other issues. Picking up your garbage and recycling on time is our #1 priority, but if there's a reason we can't get to you, we'll let you know as soon as possible.

Sign up for service alerts from [www.wasteline.ca](http://www.wasteline.ca)

Visit [www.oxfordcounty.ca](http://www.oxfordcounty.ca)

Follow Wasteline and Oxford County on Twitter

Please note that any updates to this calendar will be posted to [www.wasteline.ca](http://www.wasteline.ca)



# BLUE BOX COLLECTION

## 2021 BLUE BOX PRICING

83 Litre Blue Box	\$6.20/box
Lids for Blue Box (80 Litre)	\$2.70/lid
Apartment-size container	\$3.50/each
Multi-residential totes*	\$36.00/tote
Business totes*	\$72.00/tote

These items are sold at your local municipal office, the Oxford County Administration Building and the Oxford County Waste Management Facility.

Pricing subject to change, please refer to the Fees and Charges By-law for pricing details at [oxfordcounty.ca](http://oxfordcounty.ca).

\*Contact the County for Totes. Totes are only available for sale to multi-residential buildings and businesses.

## USE A BLUE BOX FOR ALL OF YOUR RECYCLABLES!

- Have recycling at the curb before 7 a.m. on collection day. Anything set out after this time risks not being collected.
- Containers should be rinsed and free of food.
- Only clear plastic bags are to be used for shredded paper. All other recyclable material placed in a plastic bag **will not** be collected.
- Contaminated Blue Boxes will be left behind. Drivers do not sort through material at the curb.

- ! Placing unacceptable items in your
- Blue Box increases program costs. Not sure what can go into your Blue Box? Use the "What Goes Where?" tool on [wasteline.ca](http://wasteline.ca) or download the wasteline app.



# WHAT GOES WHERE? WASTE SORTING TIPS

## RECYCLING

- Aerosol containers (empty)
- Aluminum foil and trays
- Bakery transparent trays (Plastic #6)
- Black plastic
- Boxboard (tissue, food boxes & pop cases)
- Cardboard boxes (flattened)
- Cardboard packaging
- Clear & coloured glass
- Coffee cup lids
- Coffee cups
- Drink/coffee takeout trays (molded paper)
- Drink & soup boxes
- Envelopes
- Flyers
- Glossy posters/paper
- Magazines, catalogues & telephone books
- Metal & aluminum containers
- Milk & juice cartons



- Newspapers
- Paper
- Paper bags
- Pizza boxes (no food residue)
- Plastic bottles (pop, water, juice)
- Plastic clamshell packaging
- Plastic cookie trays
- Plastic food containers (tubs & lids)
- Spiral wound/cardboard cans (hot chocolate, coffee, crescent rolls)
- Yogurt containers (Plastic #5)

*For City of Woodstock residents, find your Blue Box materials by visiting [www.cityofwoodstock.ca](http://www.cityofwoodstock.ca)*

## LANDFILL

- Bandages, first aid materials
- Bubble wrap
- Carbon paper
- Compostable plastic cutlery and takeout containers
- Food waste (if compost not available)
- Laminated material
- Notebooks & agendas (Cover is garbage, recycle the paper inside)
- Pens, markers, highlighters
- Pet waste
- Photographs
- Plastic cutlery
- Plastic lunch bags
- Plastic shopping bags & plastic film (or bring to depot)
- Plastic wrap
- Stickers/labels
- Straws
- Styrofoam
- Waxed paper



## WASTE DIVERSION

- Bulky styrofoam
- C&D waste
- Clothing and textiles
- Electronics
- Freon containing appliances
- Hazardous waste
- Leaf and Yard waste
- Plastic Film (Pilot)
- Recycling and cardboard
- Scrap metal
- Tires



### NEED TO DISPOSE OF SOMETHING NOT ON THE LIST?

Visit [www.wasteline.ca](http://www.wasteline.ca) or download the Wasteline app and use the "What goes where?" tool.

519-539-9800 | 1-866-537-7778  
[info@wasteline.ca](mailto:info@wasteline.ca) | [wasteline.ca](http://wasteline.ca)

# GARBAGE COLLECTION

## GARBAGE REQUIREMENTS

- All garbage must be contained in a bag, with no loose garbage in a container
- Have garbage at the curb before 7 a.m. on your collection day. Anything out after this time risks not being collected.
- Place no further than one metre from municipal curb
- Bags must not be broken or ripped
- Garbage set outs must not weigh more than 20 kgs (44 lbs)
- Both ends of the bag tag must be visible, wrapped around the neck of the bag



## BAG TAG PROGRAM

- \$2 per tag, no tax
- No minimum or maximum purchase amounts
- Debit or credit purchases are subject to store policies regarding extra charges

**NEW:** Online bag tag option  
Visit [www.wasteline.ca/bagtags](http://www.wasteline.ca/bagtags)  
for a list of vendors and to order bag tags online

## HOW MANY DO I NEED?

- One bag tag is needed for:
  - Each normal-sized bag or container (128L) with a maximum of 20 kgs (44 lbs)
- Two bag tags are needed for:
  - Bags larger than 76cm - 96 cm and containers (129-240L) with a maximum of 20 kgs (44 lbs)

For details on size restrictions and weight requirements visit [www.wasteline.ca](http://www.wasteline.ca)

## WINTER COLLECTION TIPS!

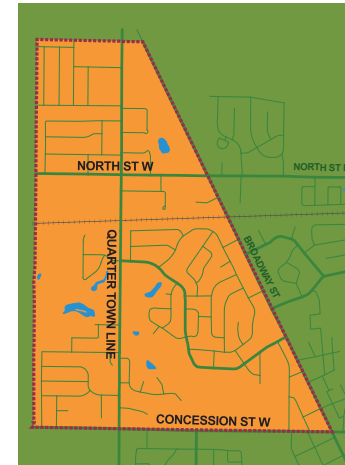
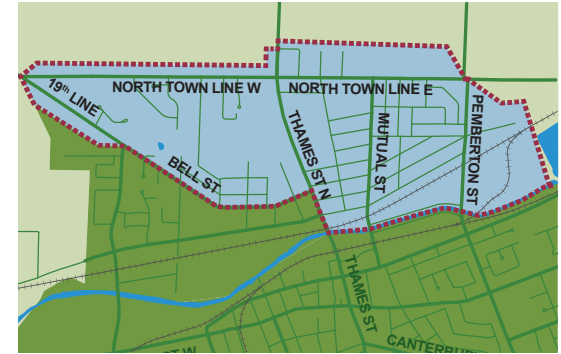
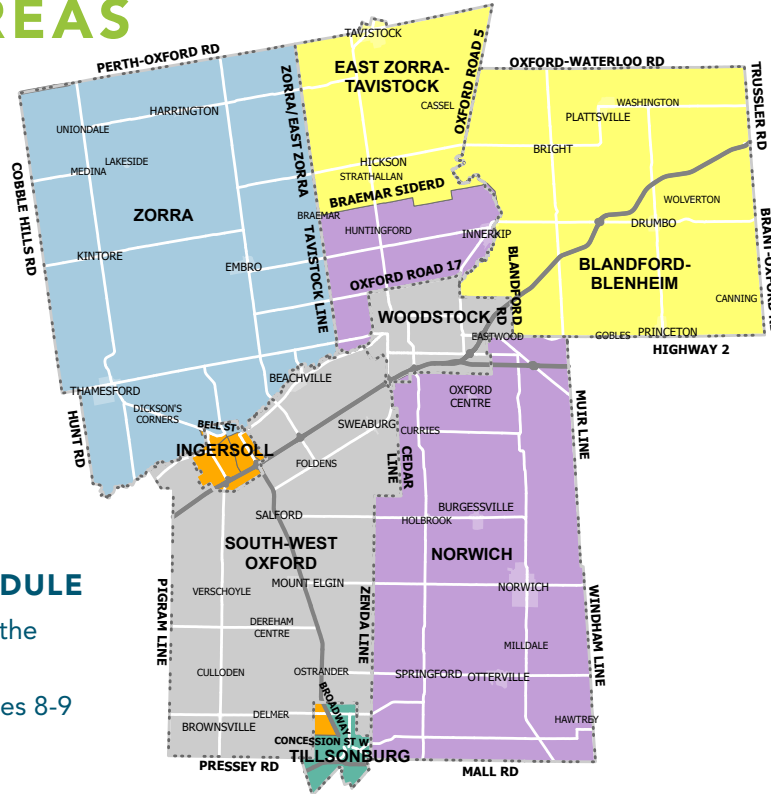
- White bags are hard to see in the winter, use dark coloured bags
- Do not place material on top of snow banks
- Keep material out of the path of snow plows and sidewalk plows
- Make sure there is a clear safe path for collectors. They have to keep one foot on the ground.





# GARBAGE & RECYCLING COLLECTION AREAS

- **MONDAY**  
Zorra / Ingersoll North
- **TUESDAY**  
Ingersoll /Tillsonburg Northwest
- **WEDNESDAY**  
Tillsonburg
- **THURSDAY**  
Norwich/East Zorra-Tavistock
- **FRIDAY**  
Blandford-Blenheim/  
East Zorra-Tavistock



 **INGERSOLL NORTH**  
Collection in this area occurs on Monday

 **TILLSONBURG NORTHWEST**  
Collection in this area occurs on Tuesday

## HOLIDAY COLLECTION SCHEDULE

There are no holiday interruptions for the municipalities listed above.

South-West Oxford residents, see pages 8-9 for curbside collection information.

Woodstock residents, please check [cityofwoodstock.ca](http://cityofwoodstock.ca).

# SOUTH-WEST OXFORD RECYCLING & GARBAGE

Red and yellow routes have been adjusted beginning September 13. Please refer to the map or visit [wasteline.ca](http://wasteline.ca) and type your address into the widget.

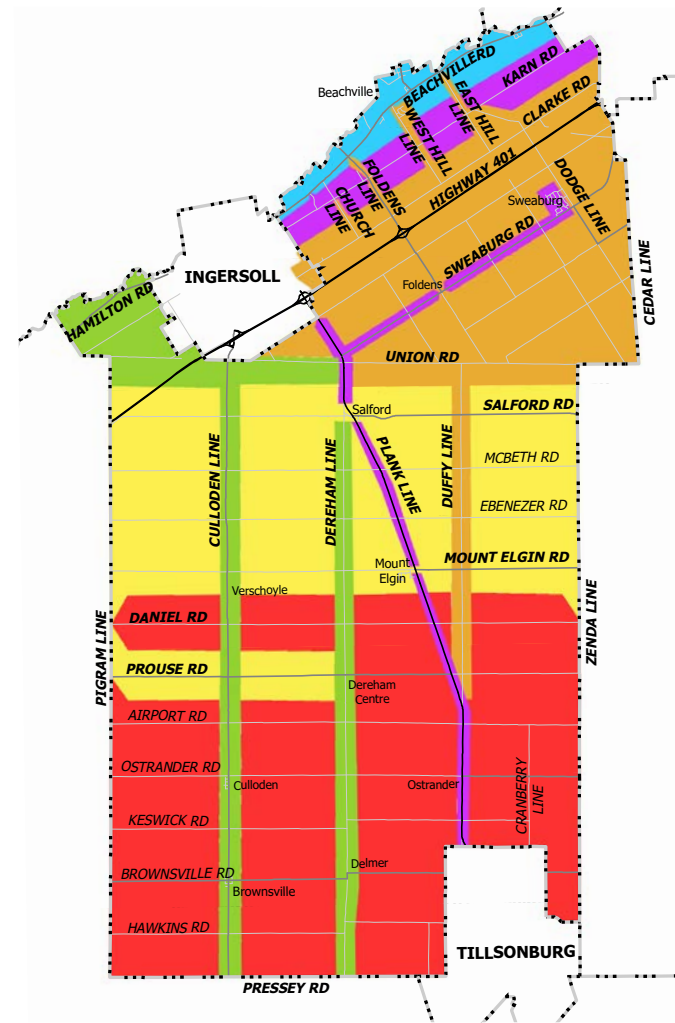
Remember to have your material to the curb by 7 a.m. to avoid being missed.

## STEP 1: FIND YOUR COLLECTION AREA

- RED AREA
- YELLOW AREA
- GREEN AREA
- PURPLE AREA
- ORANGE AREA
- BLUE AREA

## STEP 2: USE THE CHART BELOW TO FIND YOUR COLLECTION DATES

Remaining municipalities refer to previous page for collection info.



# SOUTH-WEST OXFORD COLLECTION DATES

2021	Red Dates	Yellow Dates	Green Dates	Purple Dates	Orange Dates	Blue Dates
September	3, 14, 22, 30	7, 15, 23	8, 16, 24	9, 17, 27	1, 10, 20, 28	2, 13, 21, 29
October	8, 19, 27	1, 12, 20, 28	4, 13, 21, 29	5, 14, 22	6, 15, 25	7, 18, 26
November	4, 15, 23	5, 16, 24	8, 17, 25	1, 9, 18, 26	2, 10, 19, 29	3, 12, 22, 30
December	1, 9, 17, 29	2, 10, 20, 30	3, 13, 21, 31	6, 14, 22	7, 15, 23	8, 16, 24

2022						
January	7, 17, 25	10, 18, 26	11, 19, 27	4, 12, 20, 28	5, 13, 21, 31	6, 14, 24
February	2, 10, 18	3, 11, 22	4, 14, 23	7, 15, 24	8, 16, 25	1, 9, 17, 28
March	1, 9, 17, 25	2, 10, 18, 28	3, 11, 21, 29	4, 14, 22, 30	7, 15, 23, 31	8, 16, 24
April	4, 12, 21, 29	5, 13, 22	6, 14, 25	7, 18, 26	8, 19, 27	1, 11, 20, 28
May	9, 17, 26	2, 10, 18, 27	3, 11, 19, 30	4, 12, 20, 31	5, 13, 24	6, 16, 25
June	3, 13, 21, 29	6, 14, 22, 30	7, 15, 23	8, 16, 24	1, 9, 17, 27	2, 10, 20, 28
July	8, 18, 26	11, 19, 27	4, 12, 20, 28	5, 13, 21, 29	6, 14, 22	7, 15, 25
August	4, 12, 22, 30	5, 15, 23, 31	8, 16, 24	9, 17, 25	2, 10, 18, 26	3, 11, 19, 29

**NEW**

Plastic Film Depot located at the Beachville Fire Hall (434696 W Hill Line)

For a list of acceptable materials, visit [www.wasteline.ca](http://www.wasteline.ca) and select "Special Recycling"

**LARGE  
ARTICLE  
COLLECTION**

**WEEK OF  
JUNE 13**

Download the wasteline app for reminders

# LARGE ARTICLE COLLECTION

RESIDENTIAL PROGRAM ONLY



## PROGRAM REQUIREMENT

- Have items out at the curb before 7:00 a.m. on the Monday (including Statutory Holidays) of your collection week
- Place no more than one metre from the curb
- **Items must be on your property, do not set out across the street**
- Maximum weight of any item is 45 kg
- Bag tags are not required
- Only program accepted material will be collected



## ACCEPTED ITEMS:

- Household furniture, tables, chairs, cabinets
- Carpet rolls and padding (1.8 metres maximum, rolled and bundled)
- Water softeners (no salt or contents inside)
- Pool filters and covers
- Mattresses and box springs



## PROHIBITED ITEMS:

- **Small garbage items that can fit in a garbage bag**
- Recycling, glass, mirrors
- Electronics, scrap metal, hazardous waste
- Construction, building, demolition material
- Appliances and Freon-containing units
- Loose material in boxes and bags
- Waste on trailers will not be collected
- Leaf and yard waste
- Automotive parts and tires

## KEEP OUR NEIGHBOURHOODS CLEAN!

Do not set accepted items at curb more than 3 days prior to your collection week.

**Only program accepted material will be collected.**

Property owners are responsible for removing and disposing of items left behind that did not meet program requirements and any such items that have not been removed may be subject to Municipality By-Law fines.

Visit [wasteline.ca](http://wasteline.ca) for a full list of acceptable material included in this program.

# 2022 LARGE ARTICLE COLLECTION SCHEDULE

**Town of Ingersoll**  
 Zone 1: April 4  
 Zone 2: April 11  
 Zone 3: April 18

**ADJUSTED IN 2022**  
**Township of Zorra**  
 April 25

**Township of East Zorra-Tavistock**  
 May 9

**ADJUSTED IN 2022**  
**Township of Norwich**  
 May 16

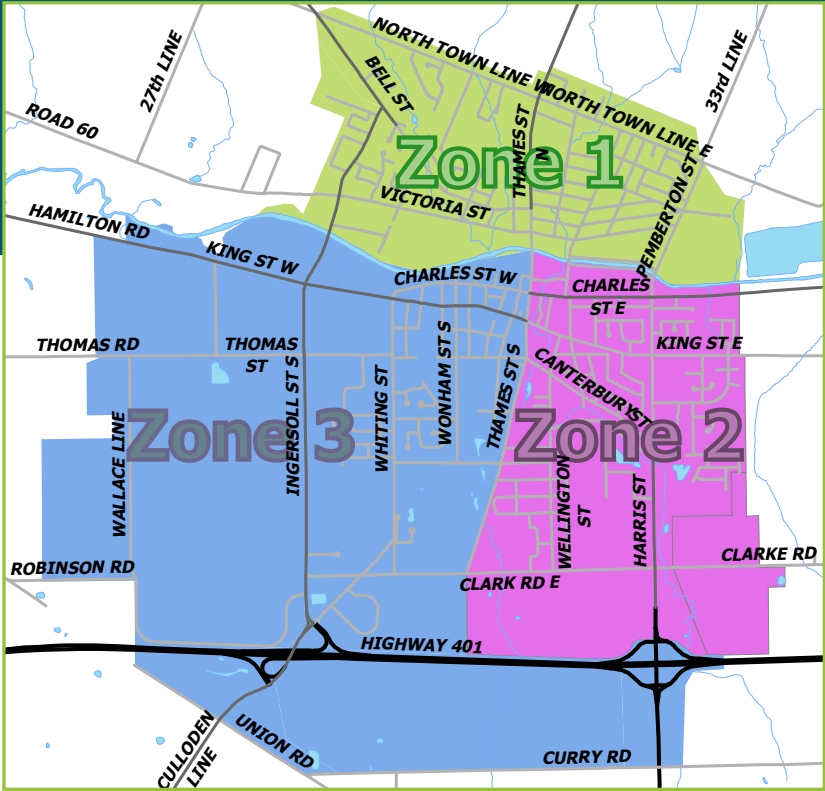
**Township of Blandford-Blenheim**  
 May 30

**Township of South-West Oxford**  
 June 13

**TILLSONBURG TRANSFER STATION, 50 NEWELL ROAD**  
 Offers year-round large article disposal every Saturday to Tillsonburg residents only, for details please see [www.tillsonburg.ca/transferstation](http://www.tillsonburg.ca/transferstation)

**WOODSTOCK ENVIRODEPOT, 944 JAMES STREET**  
 Offers year-round large article disposal to residents of Woodstock and Oxford County.\*  
[www.cityofwoodstock.ca/envirodepot](http://www.cityofwoodstock.ca/envirodepot)

\*fee charged to residents outside City limits



Residents in Woodstock can check [cityofwoodstock.ca](http://cityofwoodstock.ca) for their large article collection schedule.


## WASTE MANAGEMENT & EDUCATION CENTRE

The Oxford County Waste Management & Education Centre is a state-of-the-art facility located in Salford, ON. It is designed, constructed and operated to help reach Oxford County's commitment to 100% renewable energy by 2050 and zero waste by 2025.

Opened in June 2018, the Waste Management & Education Centre is equipped to educate and inspire students on matters relating to sustainability, zero waste and renewable energy. The centre features a variety of sustainable technologies, including enough solar photovoltaic panels to offset the electricity use of the entire landfill site, bringing energy consumption for all landfill operations – including the scale house – to net-zero.

The Education Centre offers a number of interactive displays relating to renewable energy and waste management, including a waste sorting wall, a comparison of electricity needs for various types of lights and more. Oxford County welcomes the opportunity to partner with community organizations to offer engaging educational experiences.

Anyone interested in a tour can contact the Oxford County Public Works Department at 1-866-537-7778.

Committed to   
100% RE | Zero Waste | Zero Poverty



### 2100

Oxford County is exploring innovative waste technologies that could make extending the life of the landfill to 2100 a possibility.



### 2063

The projected closing date of the landfill

## LOCATION

384060 Salford Road, Salford

## HOURS OF OPERATION

Monday – Friday 8:30 a.m. - 4:30 p.m.

Saturday 8:00 a.m. - 4:00 p.m.

Closed Sundays and Statutory Holidays

For more information visit [wasteline.ca](http://wasteline.ca)

Or call 519-539-9800 or 1-866-537-7778

## 2021 TIPPING FEES\*

- Garbage: \$80.32/ metric tonne
- Construction & Demolition: \$76.85 / metric tonne
- Freon units: \$10

## PAYMENT OPTIONS

Cash, Debit, Visa and Mastercard



**Asbestos  
requires special drop  
off arrangements**

Please contact the Oxford  
County Waste Management  
Facility for instructions

\*Pricing for 2022 subject to change, please refer the Fees and Charges By-law for pricing details at [oxfordcounty.ca](http://oxfordcounty.ca).

## Construction and demolition material

Asphalt, concrete, masonry, untreated wood, wood scrap, pallets, gypsum drywall, asphalt shingles, porcelain toilets, glass

**NOTE:** Pressure treated wood is considered garbage.

- ▼ **Tipping fees will apply if the following items are in a mixed load with garbage or**
- **construction and demolition material.**

The following items can be brought to the waste management facility at no charge:

### HOUSEHOLD RECYCLING

#### SCRAP METAL

#### LEAF AND YARD WASTE

Leaf and yard waste must be separated from brush materials

#### TIRES

Passenger and medium truck and off road tires, clean and on or off the rim, maximum 20 tires per customer per day

#### BULKY STYROFOAM

Must be clean, dry and rigid. Also offered at the Woodstock EnviroDepot and Tillsonburg Transfer Station

#### CARDBOARD

Must be flattened. Also offered at the Tillsonburg Transfer Station

#### PLASTIC FILM (pilot project)

Plastic shopping bags, plastic wrap, film packaging, etc. Also offered at the Woodstock EnviroDepot, Tillsonburg Transfer Station and Beachville Fire Hall

#### HOUSEHOLD HAZARDOUS WASTE

Including paints, fluorescent light bulbs and tubes, propane tanks and aerosol cans, batteries, household chemicals

#### ELECTRONICS

Desktop and laptop computers, televisions and monitors, cameras, projectors, printing and scanning devices

#### TEXTILES

Ripped clothing and fabric, pillows, towels, linen, stuffed animals

Material must be cleaned and dry

# COMPOSTING AT HOME

## REDUCE YOUR GARBAGE BY UP TO 24% AND SAVE ON BAG TAG COSTS AT THE SAME TIME!

Compared to a green bin collection program, backyard composting eliminates the need for more large collection vehicles on the road; reducing greenhouse gas emissions and keeping Oxford's air clean.

**Did you know?**  
the average household  
throws away **\$1,766 worth of food waste each year!** It's equal to dropping a bag of paid groceries on the way out of the store each week

\*Pricing for 2022 subject to change, please refer the Fees and Charges By-law for pricing details at [oxfordcounty.ca](http://oxfordcounty.ca).

## GREEN CONE \$50

Includes: Container, instructions, hardware, accelerator powder and accelerator applicator. Additional accelerator is available for \$4/packet.

**YES**

### WHAT GOES IN:

- Fruits, vegetables
- Food scraps, tea bags, coffee grounds
- Meat, bones, dairy
- Small amounts of pet waste

**NO**

### DON'T PUT IN:

- Large amounts of animal/pet waste
- Garbage, plastic
- Rocks, stumps
- Hazardous waste



## BACKYARD COMPOSTER \$10

Includes: Container, instructions, hardware, lids

**YES**

### WHAT GOES IN:

- Paper towels, napkins
- Small amounts of yard waste (grass, twigs, straw, weeds)
- Fruits and vegetables, egg shells and coffee grounds

**NO**

### DON'T PUT IN:

- Meat, fish, dairy, bones
- Animal/pet waste
- Garbage, plastic
- Rocks, stumps
- Hazardous waste
- Fats, oils, grease





# BRUSH, LEAF, AND YARD WASTE DEPOTS

There are 11 FREE depots located in Oxford County. Leaf and Yard material must be **separated** from Brush material.

*These depots are open 24 hours, 7 days a week.*

**BLANDFORD-BLENHEIM**  
895957 Oxford Road 3

**INNERKIP**  
90 Main Street

**TAVISTOCK**  
18 Hendershot Street

**HICKSON**  
158 Loveys Street

**NORWICH**  
22 Phebe Street

**ZORRA**  
783045 Road 78

**INGERSOLL**  
80 Pemberton Street

**SPRINGFORD**  
432594 Zenda Line

*These hours are subject to change. Check [wasteline.ca](http://wasteline.ca) or your local municipal office for hours of operation.*

**OXFORD COUNTY WASTE  
MANAGEMENT FACILITY**  
384060 Salford Road

**TILLSONBURG**  
50 Newell Road

**WOODSTOCK**  
944 James Street



## ACCEPTED LEAF AND YARD MATERIAL:

- Grass
- Hedge and tree trimmings (less than 7cm diameter)
- Leaves
- Halloween pumpkins
- House and garden plants



## ACCEPTED BRUSH MATERIAL:

- Brush (limbs longer than 1.8m will not be accepted)
- Christmas trees\*



## NOT ACCEPTED:

- Garbage
- Plastic bags
- Old fencing
- Hazardous waste
- Topsoil
- Sod
- Rocks
- Stumps



\*Ingersoll residents: there will be no curbside Christmas tree collection. Please drop off tree at the brush depot for compost.



## TIPS FOR SET OUT SUCCESS

1. Secure your materials in your Blue Box by placing heavier materials on top. Use a lid to keep items secure, and do not overfill your containers.
2. Set-outs should be clearly visible from the road, placed on a level surface no more than 1 m (3.3 ft.) from the curb or roadside.
3. For the safety of waste collectors, garbage bags and containers must not weigh more than 20kg (44lbs).
4. Personal hygiene products, including face masks, tissues and cleaning wipes, go in the garbage, not your Blue Box.

### BUY YOUR BAG TAGS

Bag tags are available for purchase online at [www.wasteline.ca/bagtags](http://www.wasteline.ca/bagtags) or at various retail outlets throughout the County

A complete list of retail outlets is available online at [www.wasteline.ca](http://www.wasteline.ca) under "Garbage Program".



# *Future*Oxford



Future Oxford presents a vision to foster and maintain a high quality of life throughout Oxford. It is a vision that inspires community members to explore and expand the potential to improve quality of life for Oxford's current and future generations. It is a vision that respects who we already are, and sees the possibilities of who we can be.

*Future Oxford: A Community Sustainability Plan* is the plan for how we will achieve this vision. The plan is guided by the Future Oxford Collective, a group of volunteers and partners advancing the Future Oxford Plan through collaboration, education and promotion. For more information and to read the Future Oxford Plan online, visit [www.futureoxford.ca](http://www.futureoxford.ca).

## ADVANCING ZERO WASTE

In 2016, Oxford County Council received its first draft Zero Waste Plan in support of its commitment to achieving Zero Waste in Oxford County. Working with the Zero Waste Oxford Action Committee to implement Future Oxford's objectives, much has been done to understand Oxford's waste composition and our opportunities to reduce waste and recover resources.

Community wellbeing | Economic vitality | Environmental leadership

[futureoxford.ca](http://futureoxford.ca)

**FutureOxford** **ZeroWasteOxford**

**ONE-WEEK WASTE AUDIT**

Knowing what's in your trash is the first step to preventing and reducing waste. This form is designed track waste by someone in the household to get a snapshot of how much you throw out in a typical week.

**How to use:** 1. Check items that apply to your household and then count or estimate the quantity of this type of item. If you recycle or compost, only include what goes into your average. 2. Consider if the type of item is one you can prevent (for instance, using food items in bulk instead of single-serving containers), reuse or recycle in the future (reuse yes or no). 3. Use blank rows below to add specific items not listed. 4. Not sure if an item can be recycled? See Wasteline's "What Goes Where?". 5. If you are able to weigh your garbage bags, you can compare how much garbage your household produces in a week to the national average shown at the end of the form.

FROM: \_\_\_\_\_ TO: \_\_\_\_\_

COMPLETED BY: \_\_\_\_\_

	# ITEMS	PREVENT?	REUSE?	RECYCLE?	TOTAL
<b>WASTE TYPE</b>					
METALS					
GLASS					
TEXTILES					
<b>ORGANIC WASTE</b>					
FOOD WASTE					
YARD WASTE					
PET WASTE					
<b>PLASTICS</b>					
R1 TO R6 PLASTICS					
POLYSTYRENE #6					
FOOD CLINGS/WRAP					
PLASTIC BAGS/BAGGIES					
UNIDENTIFIED PLASTICS					

## TRY A ONE-WEEK WASTE AUDIT

Knowing what's in your trash is the first step to preventing and reducing waste. Zero Waste Oxford has developed a waste audit tool to give you a snapshot of how much you throw out in a typical week. Download it today at [www.futureoxford.ca/resources](http://www.futureoxford.ca/resources).

# ALTERNATE WASTE OPTIONS

Your garbage bin or the landfill isn't the only option for items you no longer use. Many items can be donated, sold or up-cycled. Look for local donation stores, or other re-use options before disposing of unwanted goods. Some non-profit groups will arrange curbside pickup of unwanted goods (e.g., Canadian Diabetes Association, Kidney Foundation of Canada, etc.).

## OXFORD COUNTY DONATIONS/REUSE CENTERS

### INGERSOLL

#### **Goodwill Donation Center**

70 Thames Street N., Ingersoll, ON  
519-303-3100

#### **The Salvation Army**

48 Charles Street W., Ingersoll, ON  
519-485-4961

#### **The This and That Store**

50 Thames Street South,  
Ingersoll, ON  
519-485-1674

### WOODSTOCK

#### **Goodwill Community Store & Donation Centre**

902 Dundas Street, Woodstock, ON  
519-539-5192

#### **Salvation Army**

190 Huron Street, Woodstock, ON  
519-539-6166

#### **The United Way of Oxford County**

447 Hunter Street, Woodstock, ON  
519-539-3851

### TILLSONBURG

#### **Goodwill Community Store & Donation Centre**

79 Simcoe St, Tillsonburg, ON  
519-688-9811

#### **Salvation Army**

155 Broadway, Tillsonburg, ON  
519-842-9491

#### **Onwards Thrift**

165 Tillson Ave, Tillsonburg, ON  
519-409-5500

#### **Tillsonburg Community Church**

110 Concession Street W.,  
Tillsonburg, ON  
519-842-3231

### NORWICH

#### **Salvation Army Thrift Store**

18 Main Street W., Norwich, ON  
519-863-6375

### SOUTH WEST OXFORD

#### **Oxford County Waste Management Facility**

384060 Salford Rd., South West  
Oxford, ON  
519-539-9800

# DEPARTMENTS & SERVICES

519-539-9800 | 1-866-537-7778



## CAO & CLERK'S OFFICE

Ext. 3001

## EMERGENCY PLANNING

Ext. 3522

[www.oxford72hours.ca](http://www.oxford72hours.ca)

## PUBLIC WORKS

Ext. 3900

[publicworks@oxfordcounty.ca](mailto:publicworks@oxfordcounty.ca)  
[oxfordcounty.ca/publicworks](http://oxfordcounty.ca/publicworks)

## WASTE MANAGEMENT

Ext. 3159

[wastemanagement@oxfordcounty.ca](mailto:wastemanagement@oxfordcounty.ca)  
[oxfordcounty.ca/waste](http://oxfordcounty.ca/waste)

## COMMUNITY PLANNING

Ext. 3192

[planning@oxfordcounty.ca](mailto:planning@oxfordcounty.ca)  
[oxfordcounty.ca/planning](http://oxfordcounty.ca/planning)

## HUMAN RESOURCES

Ext. 3156

[hr@oxfordcounty.ca](mailto:hr@oxfordcounty.ca)

## PARAMEDIC SERVICES

Ext. 3464

[oxfordcounty.ca/paramedics](http://oxfordcounty.ca/paramedics)

## WOODINGFORD LODGE

Woodstock: 519-421-5556

Ingersoll: 519-485-7053

Tillsonburg: 519-688-4874

[oxfordcounty.ca/woodingford](http://oxfordcounty.ca/woodingford)

## STRATEGIC COMMUNICATIONS AND ENGAGEMENT

Ext. 3503

[communications@oxfordcounty.ca](mailto:communications@oxfordcounty.ca)  
[oxfordcounty.ca/newsroom](http://oxfordcounty.ca/newsroom)

## HUMAN SERVICES

Ext. 3390 Select "1"

[humanservices@oxfordcounty.ca](mailto:humanservices@oxfordcounty.ca)  
[oxfordcounty.ca/humanservices](http://oxfordcounty.ca/humanservices)

## OXFORD COUNTY LIBRARY

[www.ocl.net](http://www.ocl.net)

## CORPORATE SERVICES

Press 0 for Customer Service

## ARCHIVES

Ext. 3918

## TOURISM OXFORD

Ext. 3359

Toll-Free: 1-866-801-7368

[www.tourismoxford.ca](http://www.tourismoxford.ca)

## CUSTOMER SERVICE

519-539-9800

Ext. 3915 Select "2"

Toll-Free: 1-866-537-7778

[customerservice@oxfordcounty.ca](mailto:customerservice@oxfordcounty.ca)



## Ontario

211 is a helpline and website that provides information on and referrals to Ontario's community, social, health-related and government services.

The three digit telephone number 2-1-1 offers free, confidential, multilingual information 24 hours a day, 7 days a week, in more than 150 languages.

When you don't know where to turn, turn to 211.

Dial 2-1-1 or visit [www.211ontario.ca](http://www.211ontario.ca)

211 Ontario in Oxford County is supported by United Way Oxford and Oxford County.





# EMERGENCY PLANNING



## EMERGENCIES CAN HAPPEN ANYWHERE AND AT ANY TIME.

We all have a role to play in keeping our communities safe. Individuals and families should be prepared to take care of themselves for at least 72 hours in the event of an emergency.

At the government level, all municipalities and provincial ministries are required to have an emergency management program.

**Are you ready?** Learn about the three steps of emergency preparedness at [www.oxford72hours.ca](http://www.oxford72hours.ca)

## THINGS YOU SHOULD DO NOW... BEFORE A DISASTER



**KNOW THE RISKS.** Know what kind of hazards could affect you and your community.



**GET A KIT.** Be prepared to help yourself for up to 72 hours. First responders may be busy with more urgent responses. Remember every family member.



**MAKE A PLAN.** Whether it's in case of an evacuation or to mitigate risks to your farm or business, have a plan.



**PICK AN EMERGENCY CONTACT.** Choose someone out-of-town and make sure everyone in your family knows how to contact them.



**REVIEW YOUR INSURANCE.** A policy could protect your home and belongings after a disaster.

# PEDESTRIAN CROSSOVERS

A pedestrian crossover (PXO) is a designated area where pedestrians can cross the road safely. Watch for PXOs across Oxford County and know your role.

**PEDESTRIANS** have the right of way at designated crossovers. For safety, look, listen and be seen. Always wait for traffic to come to a complete stop before crossing.

**DRIVERS** and **CYCLISTS** must stop behind the pavement markings and wait until pedestrians have completely crossed the road before proceeding. Failure to do so could result in a fine of up to \$1,000 and four (4) demerit points.



# OXFORD COUNTY'S GREEN FLEET PLAN

Oxford County currently operates and maintains a corporate fleet of approximately 194 vehicles, including ambulances, light- and heavy-duty trucks, construction equipment, tractors, snowplows and more. In 2016, Oxford County Council endorsed the first Green Fleet Plan (2016-2020) to support the community-level goal of achieving 100% Renewable Energy by 2050.

Through the green fleet strategy, Oxford County has reduced fleet greenhouse gas (GHG) emissions by 9.3% (226 tonnes CO<sub>2</sub>e) and introduced Canada's first CNG-powered snow plow and Canada's first hybrid ambulance. The County is currently on track to surpass its target of a 14.1% reduction of GHG emissions by 2025. To support this goal, the County will replace 35 half-ton pickup trucks with hybrid-electric vehicles (HEV) and, in 2024, will introduce the County's first all-electric half-ton pickup truck.



**FOR MORE INFORMATION ON WASTE MANAGEMENT IN OXFORD COUNTY  
VISIT [WASTELINE.CA](http://WASTELINE.CA) OR DOWNLOAD THE WASTELINE APP**

**OXFORD COUNTY**

21 Reeve Street, Woodstock  
519-539-9800 or 1-866-537-7778  
info@wasteline.ca  
www.wasteline.ca

**TOWNSHIP OF BLANDFORD-BLENHEIM**

47 Wilmot Street South, Drumbo  
519-463-5347 or 1-800-410-6882  
www.blandfordblenheim.ca

**TOWNSHIP OF EAST ZORRA-TAVISTOCK**

90 Loveys Street, Hickson  
519-462-2697  
www.ezt.ca

**TOWN OF INGERSOLL**

130 Oxford Street, 2nd Floor, Ingersoll  
519-485-0120  
www.ingersoll.ca

**TOWNSHIP OF NORWICH**

285767 Airport Road, Norwich  
519-468-2410  
www.norwich.ca

**TOWNSHIP OF SOUTH-WEST OXFORD**

312915 Dereham Line  
519-877-2702 or 519-485-0477  
www.swox.org

**TOWN OF TILLSONBURG**

10 Lisgar Avenue, Tillsonburg  
519-688-3009  
www.tillsonburg.ca

**TOWNSHIP OF ZORRA**

274620 27th Line  
519-485-2490 or 1-888-699-3868  
www.zorra.on.ca

*This calendar is available in alternative formats  
for the visually impaired.*



This calendar does not apply to City of Woodstock residents.